



**Rangehood Venting**

**Clothes Dryer Venting**

**Air Transfer**

**Ducting & Accessories**

**Floor Vents**

Quality Ventilation Solutions for:

**Every Building | Every Application | Every Budget**

EDITION 2.0.0



## GENERAL INFORMATION

About Us	Page
About JPM Brands	4
FAQ	5

## RANGEHOOD VENTING

Products	Page
Roof Venting Kits	6
Eave Venting Kits	7
Wall Venting Kits	8
Roof Universal Kits	9
Eave/Wall Universal Kits	10
Rangehood Adaptors	10
Rectangular Ducting	12-13

## DRYER VENTING

Products	Page
In-Laundry Kits (DVS System)	14-15
External Venting Kits (DVS System)	15-16
Components (DVS System)	17-19
Internal Venting Kits	19-20
External Venting Kits	21-22
Specific Dryer Venting	22-23

## AIR TRANSFER

Products	Page
Heat Transfer Kits	24
Components	25-26

## FLOOR VENTS

Products	Page
Polycarbonate	27
ABS Plastic	28
Metal	29
Wooden	29
Air Deflectors	30
Accessories	31

## VENTS

Products	Page
Plastic External	32-33
Stainless Steel External	34-36
External Roof	37
Diffusers	38-39
Door Grilles	40
Multi Directional Outlets & Adaptors	41-42
Return Air Grille	43

## DUCTING & ACCESSORIES

Products	Page
Roof Flashing	44
Semi-Rigid Ducting	45
Clip-Seam Solid Duct	45
Flexible Metallic Duct	46
Insulated Duct	47
Y Branch Duct Connector	48
Single Branch Duct Connector	48
Duct Connector Sleeve	49
Increases/Reducers	49
Adjustable Elbows	49
Worm Drive Clamps	50
Draft Blockers	51
Venting Cleaning Brush	51

INDEX	52-53
-------	-------



## WE ARE JPM BRANDS

With over 40 years in the ventilation industry, JPM International is a leading Australian owned importer and distributor operating from Bayswater, Victoria.

### OUR THREE CORE VALUES



#### PRODUCT

JPM's exclusive global distribution agreements ensure genuine value for our customers.

Our mission is to grow and foster stakeholder relationships.

We proudly distribute the following leading brands:

- › Deflecto
- › Kensington

#### SERVICE

Exceptional customer service with sound industry knowledge and experience.

We help you every step of the way in the decision process, so you get exactly what you're after.

Quick and efficient dispatch makes certain your items arrive promptly.

#### PRICE

To provide an extensive range of cost effective, innovative and quality venting solutions adhering to current design trends and consumer demand.

# FAQ

## What are the benefits of ventilating my home?

Our venting kits help decrease the risk of fire and vermin, control moisture residue and encourages fresh air into the home.

This creates a more comfortable, energy efficient, and healthier environment for you and your loved ones.

## Does your ducting comply with Australian Standards?

Yes, we comply to the following Australian Standards:

### Semi-Rigid Ducting:

- Australian & New Zealand Standards  
AS43826
- 4-Zero fire rating to Australian Standards  
AS150.3

### Flexible Ducting:

- Australian Standards  
AS1688.1
- 4-Zero fire rating to Australian Standards  
AS150.3

### Rectangular Ducting:

- BCA vol 1 with reference to AUS/NZ Standards  
AS 4254-1995

### Insulated Ducting:

- Australian & New Zealand Standards  
AS/NZS 4859.1

## Do your stainless steel vents comply with a Bush Attack Code?

Our stainless steel vents come supplied with cinder mesh inserts which comply with Bush Attack Code (BAL 40)

## What are the turnaround times for orders?

We do our best for on time delivery – however, orders received before 12 pm are not guaranteed to leave that day.

DESTINATION	ETA
VIC	Next Day
NSW Metro	Generally Next Day
ACT	3 - 4 Business Days
SA Metro	Generally Next Day
QLD Metro	2 - 3 Business Days
WA Metro	4 - 5 Business Days
TAS	4 - 5 Business Days



# RANGEHOOD VENTING

## ROOF VENTING KITS

## ROOF

Efficiently expel unwanted fumes and odours from your rangehood through the roof via an aluminium mushroom cowl.

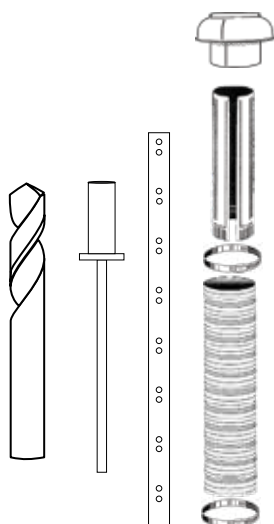
### Features and benefits:

- › Complies to Australian and New Zealand Standards: AS43826
- › Superior temperature rating of -70°C to +200°C
- › Semi-Rigid ducting keeps its shape when formed into place
- › Modern mushroom cowl provides greater protection from birds, rain and rust

### Extra Information:

- › Extend reach with additional duct, sleeve and clamps (see pages 45-51)
- › Installation by a professional is recommended

PLEASE NOTE: KITS DO NOT COME WITH ROOF SPECIFIC FLASHING (SEE PAGE 44)



### 125mm Rangehood Roof Venting Kit

#### Components:

- › RMC5M - 125mm Aluminium roof mushroom cowl with mesh
- › GSPS052430 - 125 x 610mm 30g. Galvanised clip-seam piping
- › Bracing strap 900mm (galvanised steel)
- › Rivets & drill bit
- › AO503M - 125mm x 3M Semi-rigid aluminium ducting
- › MC5/2 - 125mm Metal worm drive clamps

Model No.	Description	Diameter	Outlet
RHK125T	R/Hood Kit - Roof 125mm	125mm	Aluminium

### 150mm Rangehood Roof Venting Kit

#### Components:

- › RMC6M - 150mm Aluminium roof mushroom cowl with mesh
- › GSPS062430 - 150 x 610mm 30g. Galvanised clip-seam piping
- › Bracing strap 900mm (galvanised steel)
- › Rivets & drill bit
- › AO603M - 150mm x 3M Semi-rigid aluminium ducting
- › MC6/2 - 150mm Metal worm drive clamps

Model No.	Description	Diameter	Outlet
RHK150T	R/Hood Kit - Roof 150mm	150mm	Aluminium

### 200mm Rangehood Roof Venting Kit

#### Components:

- › RMC8M - 200mm Aluminium roof mushroom cowl with mesh
- › GSPS082430 - 200 x 610mm 30g. Galvanised clip-seam piping
- › Bracing strap 900mm (galvanised steel)
- › Rivets & drill bit
- › AO803M - 200mm x 3M Semi-rigid aluminium ducting
- › MC8/2 - 200mm Metal worm drive clamps

Model No.	Description	Diameter	Outlet
RHK200T	R/Hood Kit - Roof 200mm	200mm	Aluminium



# RANGEHOOD VENTING

## UNDER EAVE VENTING KITS

## EAVE

Externally vent your rangehood through the ceiling and out the eave using either a plastic or stainless steel vent.

### Features and benefits:

- › Complies to Australian and New Zealand Standards: AS43826
- › Superior temperature rating of -70°C to +200°C
- › Semi-Rigid ducting keeps its shape when formed into place
- › UV stabilised plastic grille vent with removable front grille and mesh for easy cleaning
- › Stainless steel eave vents boast quality construction and comply to BAL40 (Bush Attack Code 40) when used with supplied cinder mesh insert

### Extra Information:

- › Extend reach with additional duct, sleeve and clamps (see pages 45-51)
- › Installation by a professional is recommended

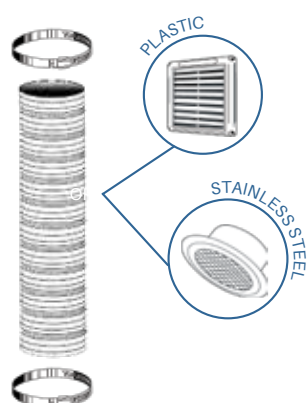


### 125mm Rangehood Eave Venting Kit

#### Components:

- › HGV5 - 125mm Fixed grille vent OR EVSS125 - 125mm Stainless steel eave vent
- › AO503M - 125mm x 3M Semi-rigid aluminium ducting
- › MC5/2 - 125mm Metal worm drive clamps

Model No.	Description	Diameter	Outlet
RHK125E	R/Hood Kit - Eave 125mm	125mm	Plastic
RHK125ESS	R/Hood Kit - Eave 125mm	125mm	Stainless Steel



### 150mm Rangehood Eave Venting Kit

#### Components:

- › HGV6 - 150mm Grille vent OR EVSS150 - 150mm Stainless steel eave vent
- › AO603M - 150mm x 3M Semi-rigid aluminium ducting
- › MC6/2 - 150mm Metal worm drive clamps

Model No.	Description	Diameter	Outlet
RHK150E	R/Hood Kit - Eave 150mm	150mm	Plastic
RHK150ESS	R/Hood Kit - Eave 150mm	150mm	Stainless Steel



### 200mm Rangehood Eave Venting Kit\*

#### Components:

- › EVSS200B - 200mm Stainless steel eave vent
- › AO803M - 200mm x 3M Semi-rigid aluminium ducting
- › MC8/2 - 200mm Metal worm drive clamps

Model No.	Description	Diameter	Outlet
RHK200ESS	R/Hood Kit - Eave 200mm	200mm	Stainless Steel

\*200mm kit comes with stainless steel vent only

# RANGEHOOD VENTING

## WALL VENTING KITS

## WALL

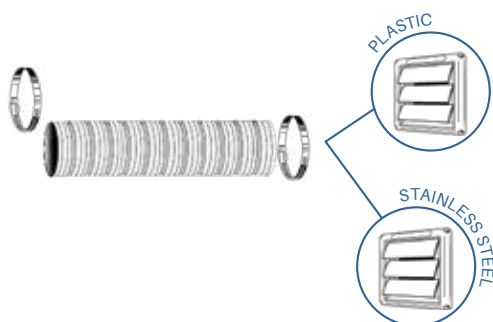
Externally vent your rangehood through the ceiling and out the wall using either a gravity louvred plastic or stainless steel vent.

### Features and benefits:

- › Complies to Australian and New Zealand Standards: AS43826 & 4-Zero fire rating to AS150.
- › Superior temperature rating of -70°C to +200°C
- › Semi-Rigid ducting does not lose shape when bent into place
- › UV stabilised polypropylene plastic louvred vent
- › Stainless steel vents boast quality construction and comply to BAL40 (Bush Attack Code 40)
- › Effective and unobtrusive

### Extra Information:

- › Extend reach with additional duct, sleeve and clamps (see pages 45-51)
- › Installation by a professional is recommended



### 125mm Rangehood Wall Venting Kit

#### Components:

- › HSR5W - 125mm Plastic gravity louvred wall vent OR GVSS125 - 125mm Stainless steel gravity wall vent
- › AO503M - 125mm x 3M Semi-rigid aluminium ducting
- › MC5/2 - 125mm Metal worm drive clamps

Model No.	Description	Diameter	Outlet
RHK125W	R/Hood Kit - Wall 125mm	125mm	Plastic
RHK125WSS	R/Hood Kit - Wall 125mm	125mm	Stainless Steel

### 150mm Rangehood Wall Venting Kit

#### Components:

- › HSR6W - 150mm Plastic gravity louvred wall vent OR GVSS150 - 150mm Stainless steel gravity louvred wall vent
- › AO603M - 150mm x 3M Semi-Rigid aluminium ducting
- › MC6/2 - 150mm Metal worm drive clamps

Model No.	Description	Diameter	Outlet
RHK150W	R/Hood Kit - Wall 150mm	150mm	Plastic
RHK150WSS	R/Hood Kit - Wall 150mm	150mm	Stainless Steel

### 200mm Rangehood Wall Venting Kit

#### Components:

- › MV200 - 200mm Plastic gravity louvred wall vent OR GVSS200 - 200mm Stainless steel gravity louvred wall vent
- › AO803M - 200mm x 3M Semi-rigid aluminium ducting
- › MC8/2 - 200mm Metal worm drive clamps

Model No.	Description	Diameter	Outlet
RHK200W	R/Hood Kit - Wall 200mm	200mm	Plastic
RHK200WSS	R/Hood Kit - Wall 200mm	200mm	Stainless Steel





The universal venting kits are ideal for single ventilation requirements that have both 125 & 150mm outlets.

(E.g. 125mm rangehood & a 150mm outlet through the roof)

### Features and benefits:

- Complies to Australian and New Zealand Standards: AS43826 & 4-Zero fire rating to AS150.3
- Superior temperature rating of -70°C to +200°C
- Includes 125 to 150mm duct increaser/decreaser
- Roof specific flashing included in the kits
- Semi-Rigid ducting does not lose shape when bent into place
- Mushroom cowl provides greater protection from birds, rain and rust

### Extra Information:

- Extend reach with additional duct, sleeve and clamps (see pages 45-51)
- Installation by a professional is recommended



### Universal Metal Roof Rangehood Kit

#### Components:

- RMC6M - 150mm Aluminium mushroom cowl with mesh
- GSPS062430 - 150 x 610mm 30g. Galvanised clip-seam piping
- KFM36 - Metal roof flashing
- Bracing strap 900mm (galvanised steel)
- Rivets & drill bit
- AO503M - 125mm x 300mm Semi-rigid aluminium ducting
- AO603M - 150mm x 3M Semi-rigid aluminium ducting
- DIRB65 - 125mm to 150mm duct increaser
- MC5/2 - 125mm Metal worm drive clamps
- MC6/2 - 150mm Metal worm drive clamps



Model No.	Description	Diameter	Outlet
RHKMR65	Universal R/Hood Kit - Metal	125 & 150mm	Roof

### Universal Tile Roof Rangehood Kit

#### Components:

- RMC6M - Aluminium mushroom cowl with mesh
- GSPS062430 - 150 x 610mm 30g. Galvanised Clip-Seam Piping
- KFT38 - Tile roof flashing
- Bracing strap 900mm x 0.8mm (galvanised steel)
- Rivets & drill bit
- AO503M - 125mm x 300mm Semi-rigid aluminium ducting
- AO603M - 150mm x 3M Semi-rigid aluminium ducting
- DIRB65 - 125mm to 150mm Duct increaser
- MC5 - 125mm Metal worm drive clamps
- MC6 - 150mm Metal worm drive clamps



Model No.	Description	Diameter	Outlet
RHKTR65	Universal R/Hood Kit - Tile	125 & 150mm	Roof

# RANGEHOOD VENTING

## UNIVERSAL VENTING KITS

## WALL & EAVE

The universal venting kits are ideal for single ventilation requirements that have both 125 & 150mm outlets.

(E.g. 125mm rangehood & a 150mm eave/wall outlet or vice-versa)

### Features and benefits:

- Includes 125 to 150mm duct increaser/decreaser
- Complies to Australian and New Zealand Standards: AS43826 & 4-Zero fire rating to AS150.3
- Superior temperature rating of -70°C to +200°C
- UV stabilised plastic grille vent with removable front grille and mesh for easy cleaning
- Semi-Rigid ducting does not lose shape when formed into place

### Additional Information:

- Extend reach with additional duct, sleeve and clamps (see pages 45-51)
- Installation by a professional is recommended



### Universal Rangehood Eave/Wall Kit

#### Components:

- HGV6 - 150mm Grille vent
- AO503M - 125mm x 300mm Semi-rigid aluminium ducting
- AO603M - 150mm x 3M Semi-rigid aluminium ducting
- DIRB65 - 125mm to 150mm Duct increaser
- MC5/2 - 125mm Metal worm drive clamps
- MC6/2 - 150mm Metal worm drive clamps

Model No.	Description	Diameter	Outlet
RHKE65	Universal R/Hood Kit - Eave/Wall	125 & 150mm	Eave/Wall

## RANGEHOOD ADAPTORS

### Rectangular to Round Adaptor

- Suit rectangular outlets 130mm (W) x 290mm (D) or less
- Full aluminium construction for maximum fire and corrosion protection
- Alcohol wipe for surface cleaning prior to attachment
- Fire retardant/heat resistant adhesive included



Model No.	Description	Diameter	Dimensions W x H x D (mm)	Carton Qty
RHA5	R/HOOD ADAPTOR	125mm	130 x 110 x 290	6

### Rangehood Flange Adaptor

- Made from galvanised steel for maximum fire protection
- Two options available for 125 & 150mm outlets
- Alcohol wipe for surface cleaning prior to attachment
- Fire retardant/heat resistant adhesive ring



Model No.	Description	Diameter	Dimensions	Carton Qty
RHF5R	FLANGE ADAPT 125mm	125mm	13mm flange x 50mm (H)	6
RHF6R	FLANGE ADAPT 150mm	150mm	13mm flange x 50mm (H)	6

Decrease the risk of fire and vermin by externally venting your rangehood



# RANGEHOOD VENTING

## RECTANGULAR DUCTING

This range offers a low profile rectangular ducting alternative to standard round aluminium ducting and is ideal for installations with minimal space allowances.

### Features and benefits:

- › Light-weight self extinguishing PVC complies with BCA vol 1 with reference to AUS/NZ standards AS4254-1995
- › 204 x 60mm replacement for 125-150mm round ducting
- › Modular components slide together for easier installation
- › White ducting that can be painted to blend in with existing decor



### Rectangular Ducting

- › Flat pack channel duct piece

Model No.	Description	Carton Qty
FD2001	Flat-pack Duct 1M	6
FD2002	Flat-pack Duct 2M	6



### Rectangular Duct Connector

- › Connects two rectangular duct pieces for extended length

Model No.	Description	Carton Qty
FD2003	Duct Connector	6



### 45° Horizontal Bend

- › Connects to a channel duct and re-directs air at a 45° angle

Model No.	Description	Carton Qty
FD2004	45° Horizontal Bend	6



### 90° Horizontal Bend

- › Connects to channel duct and re-directs air at a right angle.

Model No.	Description	Carton Qty
FD2005	90° Horizontal Bend	6



### 45° Vertical Bend

- › Connects to a channel duct and re-directs air at a 45° angle

Model No.	Description	Carton Qty
FD2006	45° Vertical Bend	6



### 90° Vertical Bend

- › Connects to a channel duct and re-directs air at a 90° angle

Model No.	Description	Carton Qty
FD2007	90° Vertical Bend	6



### 90° Elbow Bend

- › 125 or 150mm spigot for optional offset attachment of round vertical pipe or ducting.
- › Internal dimensions: 210mm (W) x 66mm (D) x 240mm (L)

Model No.	Description	Carton Qty
FD2009	150mm 90° Rotating Bend	6

# RANGEHOOD VENTING

## RECTANGULAR DUCTING

### Horizontal T-Piece

- › Connects to channel duct and re-directs air

Model No.	Description	Carton Qty
FD2008	Horizontal T-Piece	6



### Circular Reducer/Expander

- › Connects to rangehood outlet and reduces/expands diameter for attachment of elbow bend or circular ducting

Model No.	Description	Connects to Elbow	Carton Qty
FD2014	Circ. Reducer/Expander 100 to 125mm	N/A	6
FD2015	Circ. Reducer/Expander 100 to 150mm	FD2009	6
FD2016	Circ. Reducer/Expander 125 to 150mm	FD2009	6
FD2017	Circ. Reducer/Expander 150 to 200mm	FD2009	6



### Round to Flat Straight Adaptor

- › Connects to 125mm round outlets and converts to channel duct

Model No.	Description	Carton Qty
FD2010	Rnd - Flat Apt.	6



### Flat Duct Clip

- › Secures ducting to the wall or ceiling
- › Simply screw the clip in then click the ducting into place

Model No.	Description	Carton Qty
FD2012	Flat Duct Clip (Plastic)	6
FD2013	Flat Duct Clip (Metal)	6



### Wall Plate

- › Covers any imperfections from the cut-out in the wall or ceiling.
- › Provides an attractive finish to the ventilation system.

Model No.	Description	Carton Qty
FD2011	Wall Plate	6



### Outlet Grille / Air Brick

- › Connects to channel duct as an external fixed louvred vent and easily replaces existing brick
- › Quality stainless steel construction (Model No: SSE204)

Model No.	Description	Outlet	Carton Qty
SSE204	Outlet Grille - Stainless Steel	Plastic	6
VKC5631BR	Outlet Grille - Brown	Plastic	6
VKC5631T	Outlet Grille - Terracotta	Plastic	6



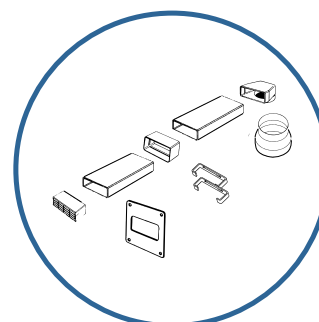
LIMITED STOCK OF VKC5631BR (BROWN) & (TERRACOTTA)  
DISCONTINUED WHEN SOLD OUT.

### Rectangular Duct Rangehood Wall Venting Kit

- › Extend reach with additional channel and connectors

#### Components:

- › FD2012 - Flat duct clip (x2)
- › FD2009 - 90° Elbow bend
- › SSE204 - Outlet grille (stainless steel)
- › FD2011 - Rectangular wall plate
- › FD2003 - Rectangular duct connector
- › FD2002 - Flat-pack duct 2M
- › DIRB65 - Duct increaser/reducer
- › AO - 150mm x 750mm Semi-rigid round ducting



Model No.	Description	Outlet	Carton Qty
LFRHKW	Flat Ducting Wall Venting Kit	Wall	1

PROFESSIONAL INSTALLATION RECOMMENDED



# CLOTHES DRYER VENTING

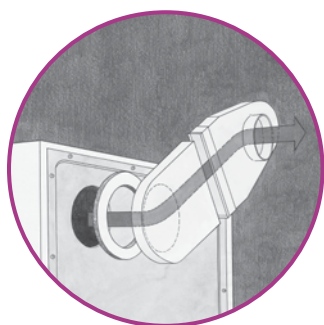
## DVS SYSTEM: IN-LAUNDRY VENTING

Deflecto clothes dryer venting solutions are engineered for health, safety and energy efficiency.

Clothes dryer venting removes lint, moisture and mildew from building up. This reduces structural damage, the risk of fire and keeps your home cleaner.

Further benefits include decreased electricity usage as drying times are quicker and more efficient.

Clothes dryer ventilation kits & components have a **diameter of 100mm** suiting most current dryer models and applications.



### Inlet/Outlet Kit

Ideal for dryers backing onto an external wall.

#### Extra Information:

May be extended using DVS components (pages 17-19) and vented outside using a DVS1 - Through the wall kit (page 15)

#### Features:

- › Offers 360° installation option that fits under wall bracket
- › 275mm inlet/outlet centre to centre reach

#### Components:

- › DVSi - Low profile inlet
- › DVSSC - Saddle clamp (supports DVSi to the rear of dryer)
- › DVSWO - Low profile wall outlet
- › DVSGR - Double sided, self adhesive gasket ring
- › DVSTP - DVS tape disks
- › 361TAPE - Cloth tape
- › Includes double sided adhesive pads for wall mount option.



Model No.	Description	Diameter (mm)
DVS2	Dryer Vent Sys. - Inlet/Outlet Kit	100

### Rectangular to Round Kit

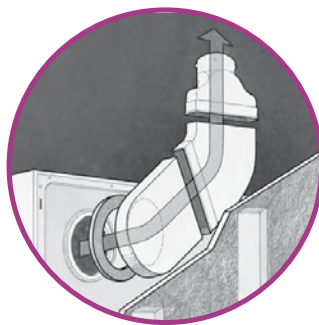
This kit reaches the nearest edge of the dryer, where it is continued via flexible duct, DVSA duct adaptor and any DVS external ducting option.

#### Features:

- › Top, side or bottom installation options
- › 275mm reach from inlet centre to machine's edge

#### Components:

- › DVSi - Low profile inlet
- › DVSSC - Saddle clamp (supports DVSi to the rear of dryer)
- › DVSE - Low profile 45° elbow
- › DVSO - Low profile outlet
- › DVSGR - Double sided, self adhesive gasket ring
- › 361TAPE - Cloth tape
- › Includes double sided adhesive pads for wall mount option



Model No.	Description
DVS3	Dryer Vent Sys. - Inlet/Outlet Kit

# CLOTHES DRYER VENTING

## DVS SYSTEM: IN-LAUNDRY VENTING

### Corner Duct Kit

Suits dryers positioned on an internal wall that need to navigate around a 90° corner to ventilate outside through a secondary wall, eave or roof.

#### Features:

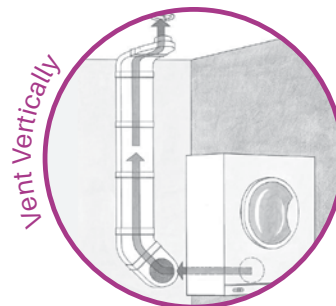
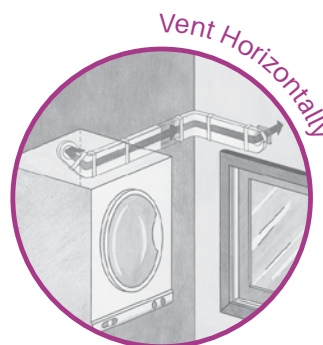
- › Top, side or bottom installation options
- › 275mm reach from inlet centre to machine's edge
- › 1250mm maximum reach from inlet centre to wall corner

#### Extra Information:

- › Centre of dryer's outlet must be within 160mm of the dryer's edge
- › Use with DVS1 (through the wall kit) to vent the dryer outside through an external wall
- › Use with DVS4 (ceiling to eave kit) to vent the dryer outside via the eave
- › Use with DVS6 (ceiling to roof kit) to vent the dryer outside via the ceiling

#### Components:

- › DVSi - Low profile inlet
- › DVSE - Low profile 45° elbow
- › DVSC - Low profile 90° internal corner duct
- › DVSWO - Low profile wall outlet
- › DVSD - Low profile 300mm extension duct (x3)
- › DVSGR - Double sided, adhesive gasket ring
- › DVSSC - Saddle clamps (x4)
- › 361TAPE - Cloth tape



Includes double sided adhesive pads for wall mount option

Model No.	Description	Diameter (mm)
DVS5	Dryer Vent Sys. - Corner Duct	100

## DVS SYSTEM: EXTERNAL VENTING

### Through the Wall Kit

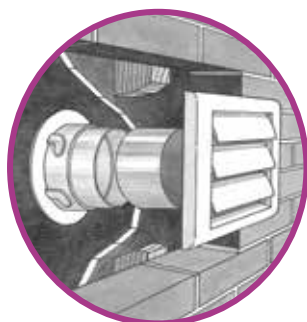
Accepts dryer exhaust from in-laundry ducting option and vents outside.

#### Features:

- › Used in conjunction with an in-laundry ducting option
- › Back-flow control eliminates the entry of birds and vermin
- › Wall plate accepts DVSA (duct adaptor/connector)
- › Wall plate also accepts DVSWO (waste outlet)

#### Components:

- › DVSP - Plug
- › DVSWP - Low profile wall plate
- › DP411S - 100 x 280mm Aluminium clip-seam solid pipe
- › HSR4W - Gravity louvred plastic wall vent **or** GVSS100 Gravity louvred stainless steel vent



Model No.	Description	Diameter (mm)
DVS1	Dryer Vent Sys. - Wall Kit (Plastic)	100
DVS1SS	Dryer Vent Sys. - Wall Kit (Stainless Steel)	100

# CLOTHES DRYER VENTING

## DVS SYSTEM: EXTERNAL VENTING

### Ceiling to Eave Kit

Accepts dryer exhaust from in-laundry ducting option and securely vents outside.

#### Features:

- › Back-flow control eliminates entry of birds and vermin

#### Extra Information:

- › DVSWP Wall plate accepts DVSA (duct connector)
- › DVSWP Wall plate accepts DVSWO (wall outlet)
- › Offers 2.7 metre reach from ceiling outlet to eave

#### Components:

- › DVSP - Plug
- › DVSWP - Low profile wall/ceiling plate
- › MC4 - 100mm Metal worm drive clamp
- › AO403M - 100mm x 3M Semi-rigid aluminium ducting
- › EVE - Under-eave vent



Model No.	Description	Diameter (mm)
DVS4	Dryer Vent Sys. - Eave	100

### Ceiling to Roof Kit

Accepts dryer exhaust from in-laundry ducting option and vents outside through the roof via a mushroom cowl (roof specific flashing sold separately see page 44).

#### Features:

- › Includes a rectangular to round diverter that fits under a standard wall mounting bracket for side or top venting.

#### Extra Information:

- › Centre of dryers outlet must be within 160mm of the dryer's edge
- › Wall Plate accepts DVSA (flexible duct) as a turn and lock fit
- › Wall Plate accepts DVSWO (low profile duct) as a push fit
- › 3 metre reach from ceiling outlet to roof

#### Components:

- › DVSP - Blank off plug
- › DVSWP - Low profile wall/ceiling plate
- › MC4 - Metal worm drive clamp (x2)
- › AO403MR - 100mm x 3M Semi-rigid aluminium ducting
- › GSPS042430 - 30g. Galvanised 610mm clip-seam piping
- › RMC4M - Roof mushroom cowl with mesh



Model No.	Description	Diameter (mm)
DVS6	Dryer Vent Sys. - Roof	100

# CLOTHES DRYER VENTING

## DVS SYSTEM: COMPONENTS

### Flexible Duct Connector/Adaptor

Designed to connect flexible ducting into the DVSWP - Wall Plate. Turns and locks in ducting for secure attachment, or use to extend flexible ducting by clamping 2 x 100mm lengths at either end.

#### Features:

- › Flame retardant, self-extinguishing plastic
- › Suits 100mm flexible ducting
- › L75mm x 95mm Internal Ø x External 99mm Ø



Model No.	Description	External Size (mm)
DVSA	Dryer Vent Sys. - Adaptor	(L) 75 x 95

### Low Profile Corner Duct

Extends a low profile ducting system around an internal corner and navigates air from wall to wall, or wall to ceiling

#### Features:

- › Flame retardant, self-extinguishing plastic
- › Lightly sand and paint to match laundry decor
- › Extends 160mm on either side of a corner - W195mm x D47mm



Model No.	Description	External Size (mm)
DVSC	Dryer Vent Sys. - Corner Duct	(W) 195 x (D) 47

### Low Profile Extension Duct

Extends a low profile ducting system by 300mm. Designed to fit between the dryer and a standard wall mounting bracket.

#### Features:

- › Flame retardant, self-extinguishing plastic
- › Lightly sand and paint to match laundry decor



Model No.	Description	External Size (mm)
DVSD	Dryer Vent Sys. - Extension Duct	(L) 340 x (W) 195 x (D) 47

### Low Profile Inlet Duct

Connects to dryers with a flush, rear outlet via an adhesive gasket to begin a rectangular ducting system that fits between the dryer and a standard wall mounting bracket.

#### Features:

- › Flame retardant, self-extinguishing plastic
- › L235mm x W195mm x D47mm



Model No.	Description	External Size (mm)
DVSI	Dryer Vent Sys. - Inlet Duct	(L) 240 x (W) 195 (D) 47mm

# CLOTHES DRYER VENTING

## DVS SYSTEM: COMPONENTS

### Self Adhesive Gasket Ring

DVSGR is a double sided heat resistant self adhesive ring for attached DVSi or DVSU around the dryer outlet or vent.

361TAPE provides an extra level of security between DVS system components.

Model No.	Description	External Size (mm)
DVSGR	Dryer Vent Sys. - Gasket Ring	175/135 x 7mm
361TAPE	Cloth Sealing Tape (4.5M x 48mm) - White	-



### Elbow Duct

Extends the DVS ducting system at a 45° angle. Designed to fit between the dryer and a standard wall mounting bracket.

Model No.	Description	External Size (mm)
DVSE	Dryer Vent Sys. - Elbow	(L) 235 X (W) 195 x (D) 47



### Low Profile Outlet

Converts low profile ducting to a 100mm round outlet for the connection of fire rated, flexible ducting. Designed to fit on the edge of the dryer.

#### Features:

- › Flame retardant, self-extinguishing plastic
- › L175mm x W195mm x D47mm

Model No.	Description	External Size (mm)
DVSO	Dryer Vent Sys. - Outlet	(L) 175 x (W) 195 x (D) 47



### Saddle Clamp

Galvanised for corrosion protection, this saddle clamp helps to secure the 190mm width of the DVSi - inlet duct to the outlet on the back of the dryer, or when DVS components are mounted on a wall or ceiling surface.

#### Features:

- › 3 Screw slots for attachment
- › 2 x 23mm Lugs on either end

Model No.	Description	External Size (mm)
DVSSC	Dryer Vent Sys. - Saddle Clamp	(L) 190 x (W) 25



### USA Style Adaptor Cone

When attached to a DVSi - Inlet duct, the DVSU acts as a female inlet connection to accept the dryer's exhaust from appliances with proud, rear, and spigot-type outlets.

#### Features:

- › Internal cone diameter tapers from 104mm front to 99mm rear

Model No.	Description	External Size (mm)
DVSU	Dryer Vent Sys. - USA Adaptor	175mm rear flange diameter





# CLOTHES DRYER VENTING

## DVS SYSTEM: COMPONENTS

### Low Profile Waste Inlet

Designed to adapt dryer outlets with a 100mm internal cavity diameter to a rectangular ducting system.

**Features:**

- › Flame retardant, self extinguishing plastic
- › Internal cone diameter tapers from 104mm front to 99mm rear

Model No.	Description	External Size (mm)
DVSWi	Dryer Vent Sys - Waste Inlet	(L) 200 x (W) 190 x (D) 43



### Low Profile Wall Plate

Flush fitting wall or ceiling plate, the DVSWP accepts the DVSA Adaptor (page 17) in a turn and lock fitting for flexible duct attachment, or the DVSWO - Wall Outlet (above) when using low profile ducting.

**Features:**

- › Supplied with removable plug - 101mm diameter
- › Internal D40mm x 101mm Ø

Model No.	Description	External Size (mm)
DVSWP	Dryer Vent Sys - Wall Plate	150mm outer flange diameter



### Low Profile Waste Outlet

Designed to plug into the DVSWP - Wall Plate to continue outside through an external ducting kit option. Female end accepts regular DVS components.

**Features:**

- › Flame retardant, self-extinguishing plastic
- › 100mm x 40mm spigot

Model No.	Description	External Size (mm)
DVSWO	Dryer Vent Sys - Waste Outlet	(L) 240 x (W) 195 x (D) 47



## INTERNAL

### Dryer Back Adaptor Kit

Suited for dryers with a round outlet, the dryer back adaptor kit adheres to the back of the machine using a double sided adhesive gasket ring. The kit allows for the attachment of external venting options.

**Components:**

- › GR4 - Double sided self adhesive gasket ring
- › Galvanised metal flange 100mm adaptor



Model No.	Description	Carton Qty
DB4K	Dryer Back Adaptor Kit	6

# CLOTHES DRYER VENTING

## INTERNAL

### Dryer Diverter Assembly

Use on rear vented dryers where the centre of the outlet is within 160mm of the edge of the machine. Transfers into a 100mm round outlet for attaching flexible ducting.

#### Features:

- › Fits under a standard wall mounting bracket for side/top venting
- › Overall length 350mm - Rectangular section 42mm x W150mm

#### Components:

- › DS4 - Saddle clamp dryer diverter
- › DV4 - Dryer diverter pipe
- › GR4 - Gasket ring



Model No.	Description	Carton Qty
DV4A	Dryer Diverter Assembly	6

### Dryer Internal Lint Trap

Fits directly onto dryers with a rear spigot-type outlet. Features a uniquely designed water bath trap where the fine lint missed by the dryer filter is collected on the water surface.

Combine with DVS3 or DV4A diverter kits for dryers with flush outlet hole.

#### Components:

- › Water bath lint trap - with removable lid
- › FO4 - 1 Metre flexible metallic ducting
- › CB34 - Plastic ratchet type clamps (x2)



Model No.	Description	Carton Qty
LTF	Dryer Internal Lint Trap	6

### Dryer Lint Trap with Dryer Diverter Assembly

A combination of the dryer diverter assembly and the dryer internal lint trap kits (above). Complete with a rear diverter pipe, it also transfers into a 100mm round outlet for attaching flexible ducting.

Features a uniquely designed water bath trap where fine lint missed by the dryer filter is collected on the water surface.

#### Components:

- › Water bath lint trap with removable lid
- › FO4 - 1 Metre flexible metallic ducting
- › CB34 - Plastic ratchet type clamps (x2)
- › DV4A - Dryer diverter kit



Model No.	Description	Carton Qty
LTKA	Dryer Lint Trap W/Dryer Diverter Assembly	6

# CLOTHES DRYER VENTING

## EXTERNAL

### Universal Through the Wall Kit

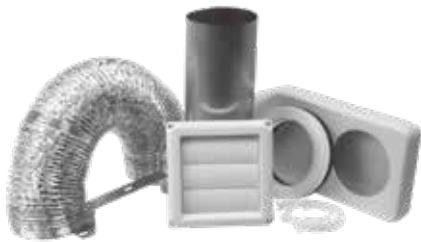
Designed to rear vent a dryer through an outside wall. Includes a rectangular to round diverter that fits under a standard wall mounting bracket for side or top venting.

**Extra Information:**

Centre of the dryer’s outlet must be within 160mm of the dryer’s edge

**Contents:**

- › HS4WJ - Gravity louvre wall vent
- › DP411S - 100mm x 280mm Aluminium clip-seam pipe
- › IC4 - Internal wall collar
- › CB34 - Plastic ratchet type clamps (x2)
- › FO408B - 2.4M Flexible metallic ducting
- › DV4A - Rear diverter kit



Model No.	Description	Outlet	Carton Qty
DK4W	Universal Dryer Exhaust Sys - Wall	Wall	6

### Universal Through the Eave Kit

Designed to rear vent a dryer through the ceiling and out the eave. Includes a rectangular to round diverter that fits under a standard wall mounting bracket for side or top venting.

**Extra Information:**

Centre of the dryer’s outlet must be within 160mm of the dryer’s edge

**Contents:**

- › EVE - Under-eave vent
- › DVSA - 100mm Flexible duct adaptor
- › DVSWP - Low profile wall plate
- › CB34 - Plastic ratchet type clamps (x4)
- › FO408B - 2.4M Flexible metallic ducting (x2)
- › DV4A - Rear diverter kit



Model No.	Description	Outlet	Carton Qty
DK4E	Universal Dryer Exhaust Sys - Eave	Wall	6

“ Clothes dryer venting reduces structural damage, risk of fire & moisture build up

# CLOTHES DRYER VENTING

## EXTERNAL

### Universal Through the Roof Kit

Designed to rear vent a dryer through the roof via the ceiling. Includes a rectangular to round diverter that fits under a standard wall mounting bracket for side or top venting.

Roof specific flashing not included please see page 44.

#### Extra Information:

Centre of the dryer's outlet must be within 160mm of the dryer's edge

#### Contents:

- › RMC4M - 100mm Roof mushroom cowl with mesh
- › DVSA - 100mm Flexible duct adaptor
- › DVSWP - Low profile wall plate
- › CB34 - Plastic ratchet type clamps (x2)
- › FO408B x2 - 2.4M Flexible metallic ducting
- › DV4A - Rear diverter kit
- › GSPS042430 - 30g Galvanised 610mm clip seam piping
- › Bracing strap, rivets & drill bit for installation

Model No.	Description	Outlet	Carton Qty
DK4R	Universal Dryer Exhaust Sys - Roof	Wall	6



“ Vent through the eave, wall or roof to improve air quality in your home

## Fisher & Paykel SPECIFIC DRYER VENTING

### Fisher & Paykel Dryer Vent Kit - Wall

This kit is ideal for dryers backing onto an external wall.

#### Components:

- › DVSEFP - Low profile inlet
- › DVSD - Low profile extension duct
- › DVSWO - Low profile wall outlet
- › DVSTAPE - Optional joint sealer tape

Includes double sided gasket and pads for mounting.

Model No.	Description	Outlet	Carton Qty
DVKFPW	Dryer Vent Kit - Wall	Wall	4



# CLOTHES DRYER VENTING

Fisher & Paykel

SPECIFIC DRYER VENTING



## Fisher & Paykel Dryer Vent Kit - Short

This kit reaches the nearest edge of the dryer where you can continue to duct using FO408B Flexible Ducting.

**Components:**

- › DVSFP - Low profile inlet
- › DVSE - Low profile 45° elbow
- › DVSD - Low profile to 100mm round outlet
- › DVSTAPE - Optional joint sealer tape

Includes double sided gasket and pads for mounting.

Model No.	Description	Outlet	Carton Qty
DVKFPS	Dryer Vent Kit - Short	Wall	6

## Fisher & Paykel Dryer Vent Kit - Long

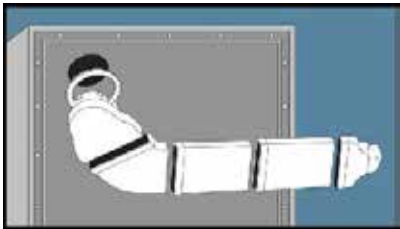
This kit reaches the longest edge of the dryer where you can continue to vent using FO408B Flexible Ducting.

**Components:**

- › DVSFP - Low profile inlet
- › DVSE - Low profile 45° elbow
- › DVSD - Low profile extension duct x 2
- › DVSO - Low profile to 100mm round outlet
- › DVSTAPE - Optional joint sealer tape

Includes double sided gasket and pads for mounting.

Model No.	Description	Outlet	Carton Qty
DVKFPL	Dryer Vent Kit - Long	Wall	2





# AIR TRANSFER

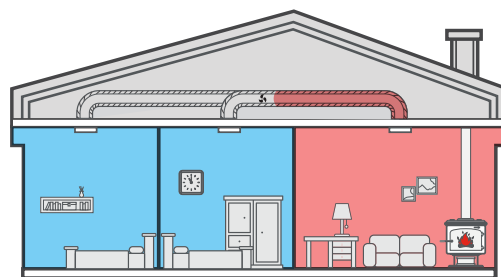
## HEAT TRANSFER KITS | INSULATED

Heat Transfer Kits utilise and distribute existing warm air from a room with a single heat source (such as a fire or pot belly stove) to colder rooms within the home using an inline fan.

Designed for safety, the kits come supplied with Australian Standards (AS/NZS 4859.1) approved fire-rated insulated ducting and the inline-fan shuts off in case of electrical fault.

### Extra Information:

- › The vents can be painted to match your colour scheme



Professional installation strongly recommended



### 1 to 1 Room Kit

#### Components:

- › FT150F - 150mm Inline-fan
- › TFG6 - 150mm Ceiling diffuser
- › DJ150 - 150mm Downjet ceiling outlet
- › D603M - Rt.06 Insulated ducting 150mm x 3M
- › D606M - Rt.06 Insulated ducting 150mm x 6M
- › MC6 - 150mm Metal worm drive clamps (x4)

Model No.	Description
HTK1	1 to 1 Room Heat Transfer Kit



### 1 to 2 Rooms Kit

#### Components:

- › FTPRO150F - 150mm Inline-fan
- › TFG6 - 150mm Ceiling diffuser
- › DJ150 - 150mm Downjet ceiling outlet
- › D603M - Rt.06 Insulated ducting 150mm x 3M
- › D606M - Rt.06 Insulated ducting 150mm x 6M (x2)
- › D666-I - Insulated branch take off 150 x150x150mm
- › MC6 - 150mm Metal worm drive clamps (x8)

Model No.	Description
HTK2	1 to 2 Rooms Heat Transfer Kit



### 1 to 3 Rooms Kit

#### Components:

- › FTPRO200F - 200mm Inline-fan
- › TFG8 - 200mm Ceiling diffuser
- › DJ150 - 150mm Downjet ceiling outlet (x3)
- › D806M - Rt.06 Insulated ducting 200mm x 6M
- › D606M - Rt.06 Insulated ducting 150mm x 6M (x2)
- › D666-I - Insulated branch take off 150mmx150x150
- › D866-I - Insulated branch take off 200mmx150x150
- › MC6 - 150mm Worm drive clamp (x8)
- › MC8 - 200mm Worm drive clamp (x4)

Model No.	Description
HTK3	1 to 3 Rooms Heat Transfer Kit

# AIR TRANSFER

## COMPONENTS

### FT Series Inline-Fan

The FT series of inline-fans are suitable for expelling or supplying cold or warm air in areas such as bathrooms, toilets, ensuites and homes.

The FT150F is lightweight with a robust aluminium fan housing and high strength steel axial impellers.

The FTPRO150F & FTPRO200F have two speed settings for air flow control, a removable body for maintenance and an integrated mounting foot for easier installation. All fans can be mounted in any position.

Designed for safety, the fans are fitted with a one shot thermal fuse, which switches off in the event of an electrical fault. All models come with a 12 month warranty from installation.

**Professional installation recommended**

Model No.	Description	Diameter (mm)
FT150F	Mini-tube Inline-Fan 150mm	150
FTPRO150F	Pro-vent Inline-Fan 150mm	150
FTPRO200F	Proven Inline-Fan 200mm	200



FTPRO150F

### Insulated Ducting

Flexible silver/black core ducting surrounded by white polyester insulation. Supplied in a strong, silver foil outer sleeve to minimise the effects of external conditions on internal duct temperatures.

#### Extra Features:

- › Complies with AS/NZS 4859.1
- › Insulated with allergen-free polyester fibre

#### Extra Information:

- › Australian made
- › 10 year warranty
- › Keep taut for maximum airflow efficiency

Model No.	Description	Diameter (mm)	Length
D603M	Rt 0.6 Ins. Duct 150mm x 3M	150	3M
D606M	Rt 0.6 Ins. Duct 150mm x 6M	150	6M



# AIR TRANSFER

## COMPONENTS

### Flexible Metallic Duct

Allows ducting for sharp turns and other angles making it suitable for roof installation. This multiple use multi-layered, metallic ducting can be used for exhaust of bathrooms, air transfer, clothes dryers, and other applications.

#### Extra Features:

- › Temperature rating -18 ° to +130 °C
- › Complies with Australian Standards AS1668.1
- › 4-zero fire rating to Australian Standards AS1530.3

#### Extra Information:

- › Stretch taut for maximum airflow efficiency

Model No.	Description	Diameter (mm)	Length (M)	Carton Qty
FO603M	Flexible Duct 150mm x 3M	150	3	6
FUL0625	Flexible Duct 150mm x 7.6M	150	7.6	6



### Ceiling Diffuser

Commonly used for air intake, the ceiling diffuser accepts air from surrounding surfaces making it ideal for warm air extraction/transfer.

#### Extra Features:

- › 180° airflow spread
- › Adjustable inverted centre cone centre for desired airflow control
- › Designed for easy installation and removal for cleaning

Model No.	Description	Inner Diameter (mm)	Outer Diameter (mm)	Carton Qty
TFG6	Ceiling Diffuser - 150mm	150	200	6
CD200	Ceiling Diffuser - 200mm	200	320	6



### Downjet Diffuser

The downjet ceiling diffuser evenly streams air to a chosen area.

Simple to install, it comes with spring loaded attachment arms that lock and secure the vent in place.

#### Extra Features:

- › Outlet vents can be closed by pushing in and turning the central control knob to activate the internal butterfly damper.

Model No.	Description	Inner Diameter (mm)	Outer Diameter (mm)	Carton Qty
DJ150	Downjet Outlet - 150mm	150	240	6
DJ200	Downjet Outlet - 200mm	200	290	6



# FLOOR VENTS

## POLYCARBONATE

### Ducted Heating Floor Vents

The Deflecto range of polycarbonate vents come in 11 designer colours to suit any colour scheme.

Constructed from polycarbonate plastic and featuring triple air dampers to provide streamline air flow and control. The vents can be adjusted by simply sliding the middle dampner.

#### Two Sizes Available:

- › 300 x 100mm (Outer measurements: 340 x 140mm)
- › 350 x 150mm (Outer measurements: 356 x 152mm)

#### Extra Information:

- › 5 year replacement warranty
- › Australian made
- › Maintenance and rust free
- › Dishwasher safe



D201

#### 11 Colours Available:



- › Shrink wrapped for individual retail sale
- › Order bulk pack of 10 units per colour and save 5%

#### 300 x 100mm

Model No.	Description	Colour	Carton Qty
D201	Poly Floor Vent	Light Beige	10
D202	Poly Floor Vent	Grey	10
D204	Poly Floor Vent	White	10
D205	Poly Floor Vent	Green	10
D206	Poly Floor Vent	Cream	10
D207	Poly Floor Vent	Slate	10
D208	Poly Floor Vent	Coffee	10
D209	Poly Floor Vent	Chocolate	10
D210	Poly Floor Vent	Mushroom	10
D213	Poly Floor Vent	Dark Beige	10

#### 350 x 150mm

Model No.	Description	Colour	Carton Qty
D221	Poly Floor Vent	Light Beige	10
D224	Poly Floor Vent	White	10
D225	Poly Floor Vent	Green	10
D226	Poly Floor Vent	Cream	10
D227	Poly Floor Vent	Slate	10
D228	Poly Floor Vent	Coffee	10
D229	Poly Floor Vent	Chocolate	10
D230	Poly Floor Vent	Mushroom	10
D231	Poly Floor Vent	Brown	10
D233	Poly Floor Vent	Dark Beige	10

“Control air flow by simply sliding the middle dampner

# FLOOR VENTS

ABS PLASTIC

300 x 100mm

## Ducted Heating Floor Vents

Constructed from durable ABS plastic and featuring a sleek look with rounded corners, the floor vents are both contemporary and durable.

These vents have a smooth fully closing damper operation with flush button control mechanics to regulate air flow.

### Extra Information:

- › Outer measurements: 330 x 130mm
- › High strength fabrication
- › 5 year replacement warranty
- › Low maintenance and rust free
- › Dishwasher safe



WHITE



IRON BROWN



CREAM



STONE



EARTH



BEIGE



GUM GREEN



CHERRYWOOD



SILVER GREY



DEEP GREY



DUSK MUSK

Model No.	Description	Colour	Hole Size (mm)	Carton Qty
RF41203	ABS Plastic Floor Vent	White	300 x 100	10
RF41213	ABS Plastic Floor Vent	Iron Brown	300 x 100	10
RF41217	ABS Plastic Floor Vent	Cream	300 x 100	10
RF41218	ABS Plastic Floor Vent	Stone	300 x 100	10
RF41226	ABS Plastic Floor Vent	Earth	300 x 100	10
RF41228	ABS Plastic Floor Vent	Beige	300 x 100	10
RF41244	ABS Plastic Floor Vent	Gum Green	300 x 100	10
RF41249	ABS Plastic Floor Vent	Cherrywood	300 x 100	10
RF41253	ABS Plastic Floor Vent	Silver Grey	300 x 100	10
RF41259	ABS Plastic Floor Vent	Deep Grey	300 x 100	10
RF41256	ABS Plastic Floor Vent	Dusk Musk	300 x 100	10



# FLOOR VENTS

## METAL

300 x 100mm

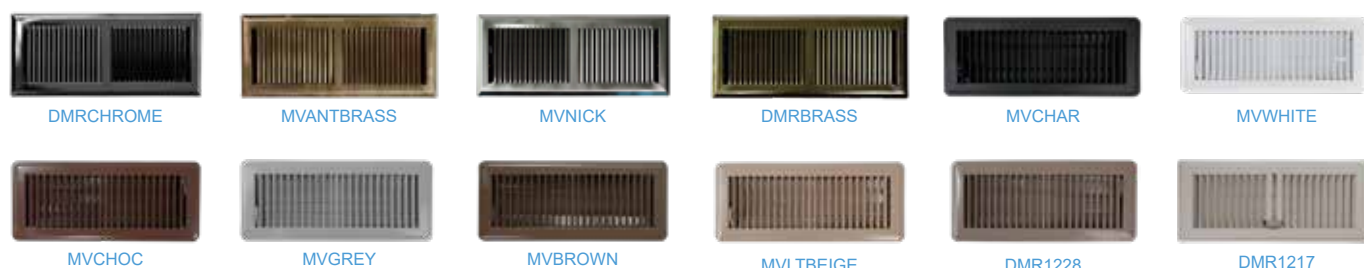
This range of metal floor vents are both modern and practical. The metal construction can withstand high traffic areas in the home, with a low profile for added safety benefits.

With two styles to choose from and a large range of attractive colours, the metal vents compliment any room.

### Extra Information:

- › Adjustable damper to regulate air flow
- › 300 x 100mm (hole size) | 335 x 135mm (outer dimensions)

### Traditional Style



Model No.	Description	Colour	Hole Size (mm)	Carton Qty
DMRCHROME	Metal Trad. Floor Vent - Chrome	Chrome	300 x 100	10
MVANTBRASS	Metal Trad. Floor Vent - Antique Brass	Antique Brass	300 x 100	10
MVNICK	Metal Trad. Floor Vent - Nickel	Nickel	300 x 100	10
DMRBRASS	Metal Trad. Floor Vent - Brass	Polished Brass	300 x 100	10
MVCHAR	Metal Trad. Floor Vent - Charcoal	Charcoal	300 x 100	10
MVWHITE	Metal Trad. Floor Vent - White	White	300 x 100	10
MVCHOC	Metal Trad. Floor Vent - Chocolate	Chocolate	300 x 100	10
MVGREY	Metal Trad. Floor Vent - Grey	Grey	300 x 100	10
MVBROWN	Metal Trad. Floor Vent - Brown	Brown	300 x 100	10
MVLTBEIGE	Metal Trad. Floor Vent - Light Beige	Light Beige	300 x 100	10
DMR1228	Metal Trad. Floor Vent - Beige	Beige	300 x 100	10
DMR1217	Metal Trad. Floor Vent - Cream	Smooth Cream	300 x 100	10

### Victorian Style



Model No.	Description	Colour	Hole Size (mm)	Carton Qty
MVICWHITE	Metal Vic. Floor Vent - White	White	300 x 100	10
MVICBRASS	Metal Vic. Floor Vent - Polished Brass	Polished Brass	300 x 100	10
MVICCHROME	Metal Vic. Floor Vent - Chrome	Chrome	300 x 100	10
MVICANTBRASS	Metal Vic. Floor Vent - Antique Brass	Antique Brass	300 x 100	10
MVICBLACK	Metal Vic. Floor Vent - Black	Black	300 x 100	10
MVICNICK	Metal Vic. Floor Vent - Satin Nickel	Satin Nickel	300 x 100	10

## WOODEN

300 x 100mm



Low profile wooden floor vents blend into existing hardwood floors, the unfinished oak can be stained to match existing floor colour.

- › 300 x 100mm (hole size) | 345 x 145mm (outer dimensions)

Model No.	Description	Colour	Carton Qty
WOODPOLOAK	Wood Vent - Polished Oak	Polished Oak	10
WOODUNFOAK	Wood Vent - Unpolished Oak	Unpolished Oak	10

NB: Colours shown are used as a guide only

# FLOOR VENTS

## AIR DEFLECTORS

### Premium Unbreakable Air Deflector

Improve heating efficiency and comfort by directing air across the floor and away from furniture and curtains.

Constructed from premium clear polycarbonate, the air deflectors are unbreakable under normal use.

#### Extra Information:

- › Adjustable 250 - 360mm (W) x 100mm (D)
- › Clear polycarbonate plastic
- › Unbreakable under normal use
- › Velcro supplied for attachment



Model No.	Description	Size (mm)	Carton Qty
50	Air Deflector Unbreakable	360 x 100 x 100	24

### Air Deflector

Improve heating efficiency and comfort by directing air across the floor and away from furniture and curtains.

#### Extra Information:

- › Adjustable 250 - 360mm (W) x 100mm (D)
- › Clear polycarbonate plastic
- › Magnets supplied for attachment



Model No.	Description	Size (mm)	Carton Qty
99	Air Deflector	360 x 100 x 100	48

### Large Air Deflector

Adjustable length (250 - 400mm) to deflect air for larger vents and is suitable for floor or wall use.

#### Extra Information:

- › Suits 400 x 100mm vents

Model No.	Description	Length	Carton Qty
51	Large Air Deflector	450 x 150 x 100	12



“Efficiently deflect warm air across the floor with our air deflectors!”

ACCESSORIES

Floor Duct Extension Kit

The floor duct extension kit is the ideal solution to extending an existing 200mm ducting heating system to branch off into an extra 150mm outlet.

Kit comes with all needed components in one easy-to-use DIY kit.

Extra Information:

- › Allows for 150mm branch take-off to an additional room/outlet
- › System suits 300 x 100mm floor vents (sold separately)

Components:

- › D301 - Plastic floor vent boot 300 x 150mm
- › D606M - Insulated ducting 150mm x 6M
- › D886 - Plastic branch take off 200 x 200 x 150mm
- › MC6 - 150mm Metal worm drive clamps (x2)
- › MC8 - 200mm Metal worm drive clamps (x2)

Model No.	Description	Duct Diameter (mm)
FDK150	Floor Duct Extension Kit	150

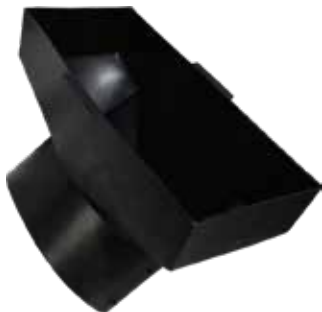


Plastic Floor Vent Boot

Made from black blown molded plastic with internal pivot damper for adjustable air volume control. Suits both metal and plastic floor vents.

Extra Information:

- › Allows for branch take-off to an additional room/outlet
- › Suits 300 x 100mm & 350 x 150mm floor vents (sold separately)
- › Secure using metal worm drive clamps (sold separately).



Model No.	Description	Size (mm)	Duct Diameter (mm)
D301	Floor Boot - 300 x 100mm	300 x 100	150
D302	Floor Boot - 300 x 100mm	300 x 100	200
D303	Floor Boot - 350 x 150mm	350 x 150	200
D304	Floor Boot - 350 x 150mm	350 x 150	250

“Our plastic floor vent boots come in a range of ducting sizes to suit your needs

Gravity Louvred

The gravity louvred vent allows air to be released by opening the louvres and closing when not in use.

The louvres are specially manufactured in a curved shape to assist in keeping the vent closed during wind or drafts, and prevents pests from entering the system.

Features UV resistant polypropylene plastic to withstand Australian climates.

Extra Features:

- › Rounded edges with mounting holes in each corner
- › 25mm deep rear spigot for ducting attachment



Front



Back

Model No.	Description	Size (mm)	Duct Diameter (mm)	Packaging	Carton Qty
HSR4W	Gravity Louvred Plastic - 100mm	150 x 150	100	Retail	6
HSR5W	Gravity Louvred Plastic - 125mm	205 x 205	125	Retail	6
HSR6W	Gravity Louvred Plastic - 150mm	205 x 205	150	Retail	6
MV200	Gravity Louvred Plastic - 200mm	250 x 250	200	Loose	19



Front



Back

Gravity Louvred with Split Rear Spigot

Same features of the gravity louvred vents (above) and comes with a split rear spigot for attachment of aluminium clip-seam for use in dryer venting.

Constructed from UV resistant calcium-filled polypropylene plastic to withstand Australian climates.

Extra Features:

- › Rounded edges with mounting holes in each corner

Model No.	Description	Size (mm)	Duct Diameter (mm)	Packaging	Carton Qty
HS4W	Gravity Louvred Split Rear - 100mm	150 x 150	100	Loose	48
DP411S	Aluminium Pipe for HS4W	280mm	100	Loose	24



“ Use a DP411S to connect to the split rear spigot of a HS4W

### Fixed Louvre

May be used as an outlet or intake vent.

The 100mm vent has vertical grilles between the louvres, whilst the 125 and 150mm vents have a 12mm mesh on their rear spigots to prevent pests and vermin from entering the system.

Features UV resistant calcium-filled polypropylene plastic that withstands Australian climates.



#### Extra Features

- › Rounded edges with mounting holes in each corner to suit modern decor

Model No.	Description	Size (mm)	Duct Diameter (mm)	Packaging	Carton Qty
HSM4WR	Fixed Louvred Plastic - 100mm	150 x 150	100	Retail	6
HSM4W	Fixed Louvred Plastic - 100mm	150 x 150	100	Loose	24
HSM5WR	Fixed Louvred Plastic - 125mm	205 x 205	125	Retail	6
HSM5W	Fixed Louvred Plastic - 125mm	205 x 205	125	Loose	12
HSM6WR	Fixed Louvred Plastic - 150mm	205 x 205	150	Retail	6
HSM6W	Fixed Louvred Plastic - 150mm	205 x 205	150	Loose	12



Not recommended as a laundry outlet vent

### Fixed Grille

The fixed grille is for wall or eave mounting and can be used as an outlet or fresh air intake vent.

Features UV resistant polypropylene plastic to withstand Australian climates.

#### Extra Features:

- › Removable front grille for easy maintenance
- › Includes fly-screen mesh

Model No.	Description	Size (mm)	Duct Diameter (mm)	Packaging	Carton Qty
HGV4	Low Profile Fixed Grille - 100mm	150 x 150	100	Retail	6
HGV5	Low Profile Fixed Grille - 125mm	205 x 205	125	Retail	6
HGV6	Low Profile Fixed Grille - 150mm	205 x 205	150	Retail	6

### Under Eave

The under eave vent offers venting for ducting diameters up to 125mm. When there is no mechanical air movement, the damper closes off preventing vermin and back draft entry.

Features UV resistant polypropylene plastic to withstand Australian climates.

#### Extra Features:

- › (L) 260 x (W) 180 x (D) 60mm
- › 75-125mm vent diameter

#### Extra Information:

- › Ensure the hole cut in the eave is set between the two dampers



Model No.	Description	Size (mm)	Duct Diameter (mm)	Packaging	Carton Qty
EVE	Under-Eave Vent	260 x 180 x 60	75-125	Retail	6



### Gravity Louvred

The gravity louvred vent allows air to be released by opening the louvres and then closing when not in use.

The louvres assist in keeping the vent closed during wind or drafts and prevents pests and vermin from entering the system.

Manufactured from quality 316 grade stainless steel, the vents are supplied with a cinder mesh insert, which means **this product complies with BAL40 (Bushfire Attack Level)**.

316 Marine Grade stainless steel contains Molybdenum, a metallic element used to toughen steel and increase resistance to oxidation and corrosion in marine and coastal areas.

#### Extra Features

- › Screws and rubber seal included

#### Extra Information

- › 50mm deep rear spigot (Models GVSS100, GVSS125)
- › 60mm deep rear spigot (Model: GVSS150)
- › 75mm deep rear spigot (Model: GVSS200B)

Model No.	Description	Size (mm)	Duct Diameter (mm)	Packaging	Carton Qty
GVSS100	Gravity Louvred Marine SS - 100mm	155 x 155	100	Retail	3
GVSS125	Gravity Louvred Marine SS - 125mm	185 x 185	125	Retail	3
GVSS150	Gravity Louvred Marine SS - 150mm	185 x 185	150	Retail	3
GVSS200B*	Gravity Louvred SS - 200mm (Bulk)	265 x 265	200	Loose	16

\* Items marked with asterisk are constructed from 304-grade stainless steel



### Hooded

The hooded stainless steel vent features an internal gravity flap allowing air to be expelled, whilst stopping cold air and pests entering the system when not in use.

Manufactured from quality 316 grade stainless steel, the vents are supplied with a cinder mesh insert, which means **this product complies with BAL40 (Bushfire Attack Level)**.

316 Marine Grade stainless steel contains Molybdenum, a metallic element used to toughen steel and increase resistance to oxidation and corrosion in marine and coastal areas.

#### Extra Features

- › Angle design for snow and heavy rain regions
- › Screws and rubber seal included

#### Extra Information

- › 50mm deep rear spigot on all models

Model No.	Description	Size (mm)	Duct Diameter (mm)	Packaging	Carton Qty
HVSS100	Hood Vent Marine SS - 100mm	155 x 155 x 80	100	Retail	3
HVSS125	Hood Vent Marine SS - 125mm	185 x 185 x 90	125	Retail	3
HVSS150	Hood Vent SS - 150mm	185 x 185 x 90	150	Retail	3



# VENTS

## EXTERNAL | MARINE GRADE STAINLESS STEEL

## WALL

### Dome

The dome stainless steel vent design provides high level protection against weather elements and can be used as an inlet or outlet vent.

Manufactured from quality 316 grade stainless steel, the vents are supplied with a cinder mesh insert, which means **this product complies with BAL40 (Bushfire Attack Level)**.

316 Marine Grade stainless steel contains Molybdenum, a metallic element used to toughen steel and increase resistance to oxidation and corrosion in marine and coastal areas.

### Extra Features

- › Screws, arrow head and rubber seal included
- › Curved design for snow and heavy rain regions

### Extra Information

- › 50mm deep rear spigot on all models

Model No.	Description	Size (mm)	Duct Diameter (mm)	Packaging	Carton Qty
DVSS100	Dome Vent Marine SS - 100mm	155mm diameter x 80mm depth	100	Retail	3
DVSS125	Dome Vent SS - 125mm	185mm diameter x 90mm depth	125	Retail	3
DVSS150	Dome Vent SS - 150mm	210mm diameter x 100mm depth	150	Retail	3
DVSS200B*	Dome Vent SS - 200mm (Bulk)	260mm diameter x 105mm depth	200	Loose	1

\* Items marked with an asterisk are constructed from 304-grade stainless steel



## EXTERNAL | MARINE GRADE STAINLESS STEEL

## EAVE

### Eave

The eave stainless steel vents are deal for under eave ventilation; featuring a flush face. The open mesh makes them suitable for wall or ceilings as an inlet/outlet vent

Manufactured from quality 316 grade stainless steel, the vents are supplied with a cinder mesh insert, which means **this product complies with BAL40 (Bushfire Attack Level)**.

316 Marine Grade stainless steel contains Molybdenum, a metallic element used to toughen steel and increase resistance to oxidation and corrosion in marine and coastal areas.

### Extra Features

- › Egg-crate style grille to prevent pests and vermin from entering the system
- › Screws and rubber seal included

### Extra Information

- › 50mm deep rear spigot (models: EVSS100, EVSS125)
- › 60mm deep rear spigot (models: EVSS150, EVSS200B)

Model No.	Description	Size (mm)	Duct Diameter (mm)	Packaging	Carton Qty
EVSS100	Eave Vent Marine SS - 100mm	145mm diameter	100	Retail	3
EVSS125	Eave Vent Marine SS - 125mm	185mm diameter	125	Retail	3
EVSS150	Eave Vent Marine SS - 150mm	210mm diameter	150	Retail	3
EVSS200B*	Eave Vent SS - 200mm (Bulk)	265mm diameter	200	Loose	24

\* Items marked with an asterisk are constructed from 304-grade stainless steel





Fixed Louvre

The fixed louvred vent is designed to allow airflow in both directions whilst preventing rain from entering the system.

Manufactured from quality 304 grade stainless steel, the vents are supplied with a cinder mesh insert, which means **this product complies with BAL40 (Bushfire Attack Level).**

Extra Features

- › Screws and rubber seal included

Extra Information

- › 50mm deep rear spigot on all models

Model No.	Description	Size (mm)	Duct Diameter (mm)	Packaging	Carton Qty
FLSS125B	Fixed Louvred Vent SS - 125mm	175 x 175	125	Loose	36
FLSS200B	Fixed Louvred Vent SS - 200mm	260 x 260	200	Loose	16

STAINLESS STEEL | CINDER MESH INSERT



Cinder Mesh Insert

Manufactured from quality 304 grade stainless steel with less than 2mm openings, the inserts suit stainless steel venting applications and **complies with BAL40 (Bushfire Attack Level).**

Extra Information

- › Use the insert to block pests and vermin from entering ventilation systems where the existing vents do not have mesh.

Model No.	Description	Size (mm)	Packaging	Carton Qty
IMA100	Cinder Mesh Insert - 100mm	100	Retail	20
IMA125	Cinder Mesh Insert - 125mm	125	Retail	20
IMA150	Cinder Mesh Insert - 150mm	150	Retail	20
IMA200	Cinder Mesh Insert - 200mm	200	Retail	20

### Aluminium Roof Mushroom Cowl

The design of the mushroom cowl offers superior protection from rain, back drafts and rodents.

The cowl slips over the roof pipe to prevent rain water running down the inside of the pipe.

#### Extra Features

- › Aluminium construction
- › Efficient air/exhaust expulsion
- › Mesh now included

#### Extra Information

- › Matches with our GSPS and PPS coded clip-seam piping (see page 47)
- › Being aluminium constructed our cowls comply to BAL29 (Bush Attack Level 29) when used with supplied cinder mesh insert



Model No.	Description	Duct Diameter (mm)	Packaging	Carton Qty
RMC4M	Mushroom Cowl - 100mm with mesh	100	Retail	10
RMC5M	Mushroom Cowl - 125mm with mesh	125	Retail	8
RMC6M	Mushroom Cowl - 150mm with mesh	150	Retail	8
RMC8M	Mushroom Cowl - 200mm with mesh	200	Retail	4

### Roof Cap Exhaust

This low profile comes complete with self flashing suitable for slate and flat bitumen style roofs. The internal damper closes when not in use, preventing rain, back drafts and vermin from entering the system.

#### Extra Features

- › UV inhibitor protects against fading and deterioration
- › Black polypropylene plastic
- › Offers 100 and 125mm connection tail piece for easy duct attachment

#### Extra Information

- › Base size: 280 x 330mm
- › Professional installation is highly recommended
- › Not suitable for tile or corrugated iron roofs



Model No.	Description	Duct Diameter (mm)	Packaging	Carton Qty
RCT	Low Profile Roof Cap	100 & 125	Loose	6

**“Our roof ventilation options keep rain, back drafts and vermin out**

### Euro Style Diffuser

Ceiling diffuser with adjustable air flow control for general air intake or exhaust. Accepts air from surrounding areas and not directly below. Ideally suited for heat, smoke and vapour extraction/transfer.

#### Extra Features

- › Plastic or stainless steel construction
- › 180° airflow spread
- › Adjustable inverted centre cone centre for desired airflow control
- › Designed for easy installation and removal for cleaning



#### Plastic

Model No.	Description	Size (mm)	Duct Diameter (mm)	Packaging	Carton Qty
TFG4	Euro Ceiling Diffuser/Intake - 100mm	150	100	Retail	6
TFG6	Euro Ceiling Diffuser/Intake - 150mm	200	150	Retail	6

“ The benefits of stainless steel with a European flair

### Euro Style Diffuser\*

Designed for use as an outlet vent and disperses air evenly away from the centre.

Open style vent with a snap off front grille and fly screen insert.

#### Extra Features

- › Plastic construction
- › Simple installation and maintenance
- › Removable front grille for easy cleaning



Model No.	Description	Size (mm)	Duct Diameter (mm)	Packaging	Carton Qty
MV125PFS	Euro Ceiling Diffuser - 125mm	170	125	Retail	20

\*Please note: This line is discontinued. Available only while stocks last.



# VENTS

## INTERNAL | DIFFUSERS

### Ceiling Diffuser

Ceiling diffuser with adjustable air flow control for general air intake or exhaust. Accepts air from surrounding areas and not directly below. Ideally suited for heat, smoke and vapour extraction/transfer.

#### Extra Features

- › Plastic construction
- › Simple installation and maintenance
- › Removable front grille for easy cleaning



Model No.	Description	Size (mm)	Duct Diameter (mm)	Packaging	Carton Qty
CD150	Ceiling Diffuser/Intake - 150mm	270	150	Retail	6
CD200	Ceiling Diffuser/Intake - 200mm	320	200	Retail	6
CD250	Ceiling Diffuser/Intake - 250mm	395	250	Retail	6
CD300	Ceiling Diffuser/Intake - 300mm	440	300	Retail	6



### Downjet Diffuser

The downjet ceiling diffuser evenly disperses air to a chosen area.

Simple to install, it comes with spring loaded attachment arms that lock and secure the vent in place.

#### Extra Features:

- › Outlet vents can be closed by pushing in and turning the central control knob to activate the internal butterfly damper.

Model No.	Description	Size (mm)	Duct Diameter (mm)	Packaging	Carton Qty
DJ150	Downjet Outlet - 150mm	240	150	Retail	6
DJ200	Downjet Outlet - 200mm	290	200	Retail	6
DJ250	Downjet Outlet - 250mm	340	250	Retail	6

## INTERNAL | CUPBOARD VENT

### Round Cupboard Vent

Push in round vent with horizontal open grilles, making them suitable for enclosed appliances such as fridges and clothes dryers that require ventilation.



Model No.	Description	Size (mm)	Rear Flange Diameter (mm)	Packaging	Carton Qty
MV50/2BVS	Round Vent Horizontal	60	48	2 Pack	40

## INTERNAL | DOOR GRILLE

### Double Sided Door Grille | Aluminium

Facilitates air flow between rooms and assists in relieving pressure when the door is closed.

Constructed from anodised aluminium, the vents are anti-corrosive and preserve appearance for minimal maintenance.

The two piece design simply clip together, eliminating the use of screws for easy installation.

#### Extra Features:

- › Suitable for doors 30-45mm thick
- › Durable light weight construction
- › Anodised coating does not flake or peel
- › Angled louvres provide privacy



Model No.	Description	Hole Size (mm)	Packaging
DG2406	Double Sided Door Grille	600 x 150	Loose
DG2408	Double Sided Door Grille	600 x 200	Loose
DG2410	Double Sided Door Grille	600 x 250	Loose
DG2412	Double Sided Door Grille	600 x 300	Loose
DG2416	Double Sided Door Grille	600 x 400	Loose
DG2418	Double Sided Door Grille	600 x 450	Loose
DG2424	Double Sided Door Grille	600 x 600	Loose

### Door Grille Set | Plastic

Facilitates air flow between rooms and assists in relieving pressure when the door is closed.

The two grilles screw together for door mounting.

#### Extra Features:

- › Plastic construction
- › Suitable for doors 27-45mm thick
- › Angled louvres provide privacy



Model No.	Description	Hole Size (mm)	Pack	Carton Qty
6145	Door Vent Plastic	435 x 75	Retail - Two Pieces	12

### Single Sided Door or Wall Grille Vent | Plastic

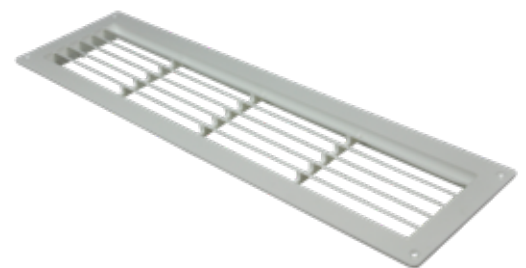
Facilitates air flow and air conditioning between rooms and assists in relieving pressure when the door and windows are closed.

Use two MV450 on opposite sides of the door or wall for general ventilation.

Use one or two adjustable MV450R for air flow control.

#### Extra Features:

- › Plastic construction
- › Suitable for doors 27-45mm thick



Model No.	Description	Hole Size (mm)	Packaging	Carton Qty
MV450	Door Vent Plastic - Open	435 x 90	Bulk	12
MV450R	Door Vent Plastic - Open/Close	435 x 90	Bulk	12

**'M Series' Duct Adaptors**

The 'M Series' duct adaptors are designed to connect the multi directional vents to ducting. Adaptor goes from square to round, the square side securely clips into the multi directional vent frame whilst the round shape connects to the ducting.

**Extra Features:**

- › Plastic construction
- › Simple maintenance

**Suits 150mm Duct**

Model No.	Description	Use With Multi Directional Outlet Model:	Dimensions (W x H x D) mm	Suits Duct (mm)
M603	M Series Duct Adaptor	MDO601, MDO602 or EG600	226 x 226 x 78	150

**Suits 200mm Duct**

Model No.	Description	Use With Multi Directional Outlet Model:	Dimensions (W x H x D) mm	Suits Duct (mm)
M604	M Series Duct Adaptor	MDO601, MDO602 or EG600	226 x 226 x 83	200
M612	M Series Duct Adaptor	MDO611	315 x 315 x 83	200

**Suits 250mm Duct**

Model No.	Description	Use With Multi Directional Outlet Model:	Dimensions (W x H x D) mm	Suits Duct (mm)
M613	M Series Duct Adaptor	MDO611	315 x 315 x 104	250

**Suits 300mm Duct**

Model No.	Description	Use With Multi Directional Outlet Model:	Dimensions (W x H x D) mm	Suits Duct (mm)
M614	M Series Duct Adaptor	MDO611	315 x 315 x 123	300
M622	M Series Duct Adaptor	MDO621 or EG625	365 x 365 x 80	300

**Suits 350mm Duct**

Model No.	Description	Use With Multi Directional Outlet Model:	Dimensions (W x H x D) mm	Suits Duct (mm)
M623	M Series Duct Adaptor	MDO621 or EG625	365 x 365 x 80	350
M632	M Series Duct Adaptor	MDO631	399 x 399 x 80	350

**Suits 400mm Duct**

Model No.	Description	Use With Multi Directional Outlet Model:	Dimensions (W x H x D) mm	Suits Duct (mm)
M624	M Series Duct Adaptor	MDO621 or EG625	365 x 365 x 80	400
M633	M Series Duct Adaptor	MDO631	399 x 399 x 80	400
M642	M Series Duct Adaptor	MDO641	397 x 590 x 80	400
M652	M Series Duct Adaptor	MDO651 or EG655	365 x 542 x 80	400

**Suits 450mm Duct**

Model No.	Description	Use With Multi Directional Outlet Model:	Dimensions (W x H x D) mm	Suits Duct (mm)
M643	M Series Duct Adaptor	MDO64	397 x 590 x 80	450
M653	M Series Duct Adaptor	MDO651 or EG655	365 x 542 x 80	450

**Suits 500mm Duct**

Model No.	Description	Use With Multi Directional Outlet Model:	Dimensions (W x H x D) mm	Suits Duct (mm)
M644	M Series Duct Adaptor	MDO641	397 x 590 x 80	500

Allows air to be directed when and where required. The aerodynamically curved blades fully adjust to smoothly open or close in unison. Simple to maintain, the grille sections are designed to be easily removed for cleaning and eliminate noise by clipping into the main diffuser housing. Featuring a flush face, the vents blend in with existing decor.

### Extra Features

- › Plastic construction
- › Suitable for heating and cooling exhaust
- › Adjustable grilles allowing you to customise air direction
- › Simple to clean and maintain

### Two Way Multi Directional Outlet

- › Suits 150 or 200mm ducting
- › **Requires M series adaptor to match the supply duct (see page 41)**
- › Add 50mm to hole size for face size

Model No.	Description	Uses Adaptor	Hole Size (mm)
MDO602	Two Way MDO Outlet	M603 or M604	230 x 230



### Four Way Multi Directional Outlet

- › Suits 150, 200, 250 or 300mm ducting
- › **Requires M series adaptor to match the supply duct (see page 41)**
- › Add 50mm to hole size for face size

Model No.	Description	Uses Adaptor	Hole Size (mm)
MDO601	Four Way MDO Outlet	M603 or M604	230 x 230
MDO611	Four Way MDO Outlet	M612, M613 or M614	310 x 310
MDO621	Four Way MDO Outlet	M622, M623 or M614	360 x 360
MDO631	Four Way MDO Outlet	M632 or M633	395 x 395



### Six Way Multi Directional Outlet

- › Suits 400, 450 or 500mm ducting
- › **Requires M series adaptor to match the supply duct (see page 41)**
- › Add 50mm to hole size for face size

Model No.	Description	Uses Adaptor	Hole Size (mm)
MDO651	Six Way MDO Outlet	M652 or M653	360 x 535
MDO641	Six Way MDO Outlet	M642, M643 or M644	390 x 585



### Square Egg Crate Grille

- › Fixed grille vent for intake or exhaust air
- › Suits 150, 200, 300, 350, 400 and 500mm ducting
- › **Requires M series adaptor to match the supply duct (see page 41)**
- › Add 50mm to hole size for face size

Model No.	Description	Uses Adaptor	Hole Size (mm)
EG600	Egg Crate Grille	M603 or M604	230 x 230
EG625	Egg Crate Grille	M622, M623 or M624	360 x 360
EG655	Egg Crate Grille	M652 or M653	360 x 535



## INTERNAL | RETURN AIR GRILLE

Used to draw air into a heating or cooling system, the return air grilles can be positioned in a ceiling or wall.

The single piece constructed return air grilles are capable of carrying high air flow and operate quietly. A scratch and chip resistant plastic frame suits high traffic areas.

Available in filtered for better air quality control.

### Extra Features:

- › Injection molded plastic

### Extra Information:

- › Use adaptor box (below) for ceiling installation
- › Use mounting box (below) for wall installation



### Unfiltered

Model No.	Description	Colour	Hole Size (mm)
XRAG404	Unfiltered Return Air Grille - 380 x 510mm	White	380 x 510
XRAG434	Unfiltered Return Air Grille - 405 x 760	White	405 x 760

### Filtered

Model No.	Description	Colour	Hole Size (mm)
XRAG414	Filtered Return Air Grille - 380 x 510mm	White	380 x 510
XRAG444	Filtered Return Air Grille - 405 x 760	White	405 x 760

### Adaptor Box



- › Use with return air grille for ceiling installation
- › Round end of adaptor connects to ducting
- › Plastic construction

Model No.	Description	Colour	Duct Size (mm)	Hole Size (mm)
XRAG425	Adaptor Box - 380 x 510mm (300mm)	Black	300	380 x 510
XRAG426	Adaptor Box - 380 x 510mm (350mm)	Black	350	380 x 510
XRAG427	Adaptor Box - 405 x 760mm (350mm)	Black	350	405 x 760
XRAG428	Adaptor Box - 405 x 760mm (400mm)	Black	400	405 x 760

### Mounting Frame

- › Use with return air grille for wall installation
- › Does not connect to ducting
- › Plastic construction

Model No.	Description	Colour	Hole Size (mm)
XRAG410	Mounting Frame - 380 x 510mm	Silver	380 x 510
XRAG440	Mounting Frame - 405 x 760	Silver	405 x 760





# DUCTING & ACCESSORIES

## ROOF FLASHING

DEKTITE®

Keep water from seeping and causing structural damage by using roof flashing to direct the flow of water away from the pipe opening. The flashing stretches over the penetration and forms a tight seal.

Designed for Australian conditions, the low profile bases provide resistance to weathering and easily conform to roof profiles and pitches for simple installation.

### Flashing for Metal Roofs

- › EPDM rubber with aluminium trim
- › Temperature rating of -50°C and up to 115°C
- › Clear markings in metric and imperial measurements
- › Lower square base covers larger openings, more forgiving for penetration openings and steeper roof pitch
- › 20 year warranty



**20**  
YEAR  
WARRANTY

Model No.	Description	Suits Pipe Size (mm)	Base Size (mm)	Colour	Packaging
DFE100B	Dektite Premium Micro	0-35	100 x 100	Black	Loose
DFE101B	Dektite Premium #1	0-55	139 x 139	Black	Loose
DFE102B	Dektite Premium #2	5-76	178 x 178	Black	Loose
DFE103B	Dektite Premium #3	5-127	221 x 221	Black	Loose
DFE104B	Dektite Premium #4	75-175	280 x 280	Black	Loose
DFE105B	Dektite Premium #5	100-200	310 x 310	Black	Loose
DFE106B	Dektite Premium #6	125-230	363 x 363	Black	Loose
DFE107B	Dektite Premium #7	150-300	456 x 456	Black	Loose
DFE108B	Dektite Premium #8	170-355	496 x 496	Black	Loose
DFE109B	Dektite Premium #9	230 - 508	681 x 681	Black	Loose

### Flashing for Tile Roofs

- › Lead free aluminium base and EPDM rubber top
- › Temperature rating of -50°C and up to 115°C
- › Clear markings in metric and imperial measurements
- › Paintable to match roof colour (after applying a standard etched primer)
- › 20 year warranty



Model No.	Description	Suits Pipe Size (mm)	Base Size (mm)	Colour	Packaging
SDA100B	Dektite Aluminium	12-70	500 x 600	Silver/Black	Loose
SDA101B	Dektite Aluminium #1	50-170	500 x 600	Silver/Black	Loose
SDA102B	Dektite Aluminium #2	110-200	600 x 600	Silver/Black	Loose
SDA103B	Dektite Aluminium #3	160-300	764 x 764	Silver/Black	Loose
SDA104B	Dektite Aluminium #4	300 - 450	956 x 956	Silver/Black	Loose

### KENSINGTON FLASHING ALSO AVAILABLE IN THE FOLLOWING SIZES:

Model No.	Description	Suits Pipe Size (mm)	Base Size (mm)	Suits Roof Type:	Colour	Packaging
KFM13	Kensington Metal Roof #1	32-76	155 x 155	Metal	Black	Loose
KFM23	Kensington Metal Roof #2	51-70	175 x 175	Metal	Black	Loose
KFM36	Kensington Metal Roof #3	76-150	250 x 250	Metal	Black	Loose
KFT38	Kensington Tile Roof #1	76-203	500 x 600	Tile	Silver/Black	Loose

# DUCTING & ACCESSORIES

## SEMI-RIGID DUCTING

## ALUMINIUM

Supplied in a compressed length, this form of semi-rigid ducting expands and holds its shape and full diameter even when bends are applied.

Constructed from continuous spiral bound aluminium, the ducting is self supportive needing only minimal fittings or mechanics each end for additional support.

Ideal for straight and indirect venting installations for clothes dryers, rangehoods, bathrooms and other general venting applications.

### Extra Features:

- › Complies with Australian Standards - AS1668.1
- › 4 - Zero fire rating to Australian Standards - 1530.3
- › Temperature rating -70 °C to +220 °C
- › Manufactured material thickness 0.89mm



### 1.4M Length

Model No.	Description	Diameter (mm)	Length (M)	Packaging
AO4014MR	Semi Rigid - 100mm x 1.4M (Bulk)	100	1.4	Loose
AO5014MR	Semi Rigid - 125mm x 1.4M (Bulk)	125	1.4	Loose
AO6014MR	Semi Rigid - 150mm x 1.4M (Bulk)	150	1.4	Loose

### 3M Length

Model No.	Description	Diameter (mm)	Length (M)	Packaging
AO48MX/9	Semi Rigid With Clamps - 100mm x 3M	100	3	Retail
AO403M	Semi Rigid - 100mm x 3M (Bulk)	100	3	Loose
AO403MR	Semi Rigid - 100mm x 3M	100	3	Retail
AO503M	Semi Rigid - 125mm x 3M (Bulk)	125	3	Loose
AO503MR	Semi Rigid - 125mm x 3M	125	3	Retail
AO603M	Semi Rigid - 150mm x 3M (Bulk)	150	3	Loose
AO603MR	Semi Rigid - 150mm x 3M	150	3	Retail
AO803M	Semi Rigid - 200mm x 3M (Bulk)	200	3	Loose

## CLIP-SEAM SOLID DUCT

## GALVANISED STEEL

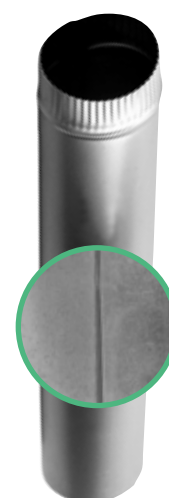
Made from 30 gauge galvanised steel, the unique clip-seam has a smooth internal finish for maximum airflow efficiency. Both seams connect together at one end and work up the length to form a solid pipe. Crimped end offers a male connection to pipe or ducting.

### 610mm Length

Model No.	Description	Diameter (mm)	Length (mm)	Packaging
GSPS042430	Clip-Seam Pipe 100 x 610mm	100	610	Loose
GSPS052430	Clip-Seam Pipe 125 x 610mm	125	610	Loose
GSPS062430	Clip-Seam Pipe 150 x 610mm	150	610	Loose
GSPS082430	Clip-Seam Pipe 200 x 610mm	200	610	Loose

### 1.2M Length

Model No.	Description	Diameter (mm)	Length (M)	Packaging
PPS04430	Clip-Seam Pipe 100mm x 1.2M	100	1.2	Loose
PPS05430	Clip-Seam Pipe 125mm x 1.2M	125	1.2	Loose
PPS06430	Clip-Seam Pipe 150mm x 1.2M	150	1.2	Loose
PPS08430	Clip-Seam Pipe 200mm x 1.2M	200	1.2	Loose



# DUCTING & ACCESSORIES

## FLEXIBLE METALLIC DUCT

Flexible multi-layered metallic ducting is ideal for general purpose ventilation and can be easily navigated around tight bends.

The multi-purpose ducting can be used for low to medium pressure exhaust venting of bathrooms, rangehoods, electric clothes dryers and other applications.

### Extra Features:

- › Complies with Australian Standards - AS1668.1
- › 4 - Zero fire rating to Australian Standards - 1530.3
- › Temperature rating -18 °C to +130 °C
- › Manufactured material thickness 0.89mm



### 2.4M Length

Model No.	Description	Diameter (mm)	Length (M)	Packaging
FO408B	Flexible Duct - 100mm x 2.4M	100	2.4	Retail

### 3.6M Length

Model No.	Description	Diameter (mm)	Length (M)	Packaging
FO503M	Flexible Duct - 125mm x 3.6M	125	3.6	Retail
FO603M	Flexible Duct - 150mm x 3.6M	150	3.6	Retail
FO803M	Flexible Duct - 200mm x 3.6M	200	3.6	Retail

### 7.6M Length

Model No.	Description	Diameter (mm)	Length (M)	Packaging
FUL0425	Flexible Duct - 100mm x 7.6M	100	7.6	Retail
FUL0525	Flexible Duct - 125mm x 7.6M	125	7.6	Retail
FUL0625	Flexible Duct - 150mm x 7.6M	150	7.6	Retail
FUL0825	Flexible Duct - 200mm x 7.6M	200	7.6	Retail

“Flexible ducting is perfect for getting around bends for clothes dryer ventilation!”

# DUCTING & ACCESSORIES

## INSULATED DUCT

Flexible silver/black core ducting surrounded by white polyester insulation. Supplied in a strong, silver foil outer sleeve to help minimise the effects of external conditions on internal duct temperatures.

### Extra Features:

- › Complies with AS/NZS 4859.1
- › Insulated with allergen-free polyester fibre

### Extra Information:

- › Australian made
- › 10 year warranty
- › Keep taut for maximum airflow efficiency
- › Rated operating temperature rating: -10°C to +80°C
- › Rated operating pressure: 100 Pa positive, 200 Pa negative



### Level R 0.6 Insulated

Use Rt 0.6 thermal rating for warm or cool air transfer where there is no direct connection to a heater or cooler.

#### 3M Length

Model No.	Description	Diameter (mm)	Length (M)	Packaging
D603M	Insulated Duct R 0.6 - 150mm x 3M	150	3	Loose
D803M	Insulated Duct R 0.6 - 200mm x 3M	200	3	Loose
D1003M	Insulated Duct R 0.6 - 250mm x 3M	250	3	Loose
D1203M	Insulated Duct R 0.6 - 300mm x 3M	300	3	Loose

#### 6M Length

Model No.	Description	Diameter (mm)	Length (M)	Packaging
D606M	Insulated Duct R 0.6 - 150mm x 6M	150	6	Loose
D806M	Insulated Duct R 0.6 - 200mm x 6M	200	6	Loose
D1006M	Insulated Duct R 0.6 - 250mm x 6M	250	6	Loose
D1206M	Insulated Duct R 0.6 - 300mm x 6M	300	6	Loose

### Level R 1.0 Insulated

Use Rm 1.0 thermal rated ducting when there is no direct connection to a heater or cooler and the ceiling floor/wall space is enclosed.

#### 6M Length

Model No.	Description	Diameter (mm)	Length (M)	Packaging
D606M+	Insulated Duct R 1.0 - 150mm x 6M	150	6	Loose
D806M+	Insulated Duct R 1.0 - 200mm x 6M	200	6	Loose
D1006M+	Insulated Duct R 1.0 - 250mm x 6M	250	6	Loose
D1206M+	Insulated Duct R 1.0 - 300mm x 6M	300	6	Loose

### Level R 1.5 Insulated

Use Rm 1.5 thermal rated ducting when there is direct connection to a heater or cooler and the ceiling floor or wall space is not enclosed in alpine areas.

#### 6M Length

Model No.	Description	Diameter (mm)	Length (M)	Packaging
D606M++	Insulated Duct R 1.5 - 150mm x 6M	150	6	Loose
D806M++	Insulated Duct R 1.5 - 200mm x 6M	200	6	Loose
D1006M++	Insulated Duct R 1.5 - 250mm x 6M	250	6	Loose
D1206M++	Insulated Duct R 1.5 - 300mm x 6M	300	6	Loose

# DUCTING & ACCESSORIES

## DUCT CONNECTORS

### Y Branch Take-Off

Made from black blown molded plastic, Y branches allow for a venting system to be directed to/received from two evenly distributed areas.

#### Extra Information

- › Not recommended for rangehood ventilation
- › Available in insulated or uninsulated

#### Uninsulated

Model No.	Description	Size (mm)
DY644	Y Connector	150 x 100 x 100
DY866	Y Connector	200 x 150 x 150
DY1088	Y Connector	250 x 200 x 200

#### Insulated

Model No.	Description	Size (mm)
DY644-i	Y Connector (Insulated)	150 x 100 x 100
DY866-i	Y Connector (Insulated)	200 x 150 x 150
DY1088-i	Y Connector (Insulated)	250 x 200 x 200



UNINSULATED



INSULATED

### Single Branch Take-Off

Made from black blown molded plastic, single branches allow for a venting system to be directed to/received from two areas.

The 45° angle take off offers a more subtle volume of air to a secondary room as the majority of airflow will be sent to the in-line outlet.

#### Extra Information

- › Not recommended for rangehood ventilation
- › Available in insulated or uninsulated

#### Uninsulated

Model No.	Description	Size (mm)
D866	Branch Take Off	200 x 150 x 150
D886	Branch Take Off	200 x 200 x 150
D888	Branch Take Off	200 x 200 x 200
D1086	Branch Take Off	250 x 200 x 150
D1088	Branch Take Off	250 x 200 x 200
D10108	Branch Take Off	250 x 250 x 200
D12108	Branch Take Off	300 x 250 x 200
D121010	Branch Take Off	300 x 250 x 250

#### Insulated

Model No.	Description	Size (mm)
D666-i	Branch Take Off (Insulated)	150 x 150 x 150
D866-i	Branch Take Off (Insulated)	200 x 150 x 150
D886-i	Branch Take Off (Insulated)	200 x 200 x 150
D888-i	Branch Take Off (Insulated)	200 x 200 x 200
D1086-i	Branch Take Off (Insulated)	250 x 200 x 150
D1088-i	Branch Take Off (Insulated)	250 x 200 x 200
D10108-i	Branch Take Off (Insulated)	250 x 250 x 200
D12108-i	Branch Take Off (Insulated)	300 x 250 x 200



UNINSULATED



INSULATED

# DUCTING & ACCESSORIES

## ACCESSORIES

### Duct Connectors

Duct connecting sleeves are used to extend the length of flexible and/or semi-rigid ducting.

Simply place a matching size metal worm drive clamp over the end of the ducting, insert one end of the sleeve into the ducting, position the clamp and tighten.

#### Extra Information

- › Constructed from galvanised steel
- › Compatible with all duct types
- › Simple installation



Model No.	Description	Diameter (mm)	External Size (mm)	Made From	Carton Qty
DAC4	Duct Connector	100	110 x 100	Galvanised Steel	6
DAC5	Duct Connector	125	110 x 125	Galvanised Steel	6
DAC6	Duct Connector	150	110 x 150	Galvanised Steel	6
DAC8	Duct Connector	200	150 x 200	Galvanised Steel	6
DAC10	Duct Connector	250	150 x 250	Galvanised Steel	6
DAC12	Duct Connector	300	150 x 300	Galvanised Steel	6

### Increases/Reducers

A secure way to increase/decrease duct size in gradual staged sections to minimise back flow pressures when increasing/decreasing diameters.

#### Extra Features:

- › Internally smooth to maximise air flow

#### Extra Information:

- › Ducting can be clamped for or riveted



Model No.	Description	Joins	Length	Made From	Carton Qty
DIRB54	Duct Increaser	100 - 125mm	150mm	Aluminium	12
DIRB65	Duct Increaser	125 - 150mm	150mm	Aluminium	6
DIRB86	Duct Increaser	150 - 200mm	180mm	Galvanised Steel	6

### Adjustable Elbows | 0 - 90°

Adjustable elbows are used to make turns in semi-rigid ducting up to 90°. Each section easily rotates and is constructed from galvanised steel providing protection against fire and corrosion.

#### Extra Information:

- › Ducting can be clamped or riveted
- › Can be used in conjunction with clip-seam piping (see page 45)



Model No.	Description	Diameter (mm)	Made From	Carton Qty
ELB049030	Adjustable Elbow	100	Galvanised Steel	12
ELB059030	Adjustable Elbow	125	Galvanised Steel	12
ELB069030	Adjustable Elbow	150	Galvanised Steel	12
ELB089030	Adjustable Elbow	200	Galvanised Steel	12



# DUCTING & ACCESSORIES

## WORM DRIVE CLAMPS

### Stainless Steel Clamp on Roll

Used in conjunction with a locking device, the stainless steel clamp allows any size worm drive clamp to be made up on site, eliminating inconvenience of carrying various sizes on site.

#### Extra Features:

- › 30M x 9mm x 0.6 roll of stainless steel band in per-calibrated ABS plastic dispenser
- › Quick and easy system
- › Locking mechanism
- › SCA - Low carbon steel nickel plated
- › Screw - 7mm cross slotted hex head in galvanised steel



CRA



SCA

Model No.	Description	Length (M)	Pack of
CRA	SS Clamp Band on Roll - 30M	30	-
SCA	SS Clamp Band With Locking Screws	-	50 (25 pairs)

### Metal Worm Drive Clamps | Stainless Steel

Metal worm drive clamps are the most effective way to attach ducting to a fitting. Eliminates the use of tape or cable ties that over time can become loose from excessive air pressures, temperature or condensation.

#### Extra Features:

- › Stainless steel construction
- › Easy to use
- › Single piece construction

#### Extra Information:

- › To use: Simply loosen the clamp with a screwdriver or 1/4" hex driver, slip the clamp over the ducting, position correctly and tighten screw firmly in a clockwise direction.
- › To remove: Rotate the screw in an anti-clockwise direction.



Model No.	Description	Diameter	Packaging
MC4/2	Worm Drive Duct Clamps - 100mm (2 pack)	Up to 114mm	Retail - 2 pack
MC5/2	Worm Drive Duct Clamps - 125mm (2 pack)	Up to 139mm	Retail - 2 pack
MC6/2	Worm Drive Duct Clamp - 150mm	Up to 165mm	Retail - 2 pack
MC8/2	Worm Drive Duct Clamp - 200mm	Up to 216mm	Retail - 2 pack

“Securely fasten your ducting and accessories with our worm drive clamps!

# DUCTING & ACCESSORIES

## ACCESSORIES

### Draft Blockers

In-line draft blockers assist in preventing back flow from entering ventilation systems. Ideally installed in rangehood ventilation exhausting out through the roof.

Manufactured with an internal spring-loaded butterfly damper, the damper opens when air passes through and closes when the venting system is not in use.

**Extra Features:**

- › Galvanised steel construction

**Extra Information:**

- › Install at regular intervals to ensure there is no blockage



Model No.	Description	Diameter (mm)	Length (mm)	Made From	Carton Qty
DBV100	Draft Blocker 100mm	100	88	Galvanised Steel	12
DBV125	Draft Blocker 125mm	125	88	Galvanised Steel	12
DBV150	Draft Blocker 150mm	150	88	Galvanised Steel	12
DBV200	Draft Blocker 200mm	200	88	Galvanised Steel	12

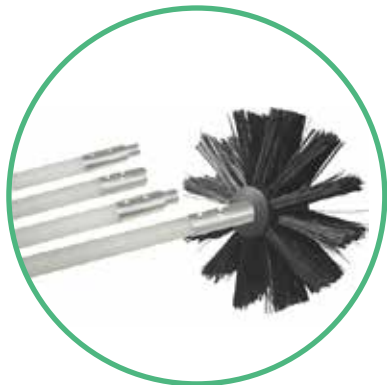
### Dryer Vent Cleaning Brush

Designed to clean ducting removing dangerous lint build-up, reducing drying time and extending dryer life.

Has three flexible detachable rods that can bend around ducting for efficient cleaning.

**Extra Features:**

- › Can be attached to a drill for more effective cleaning
- › Includes 2.4M rods
- › Easy to use



Model No.	Description	Diameter (mm)	Length (M)	Carton Qty
DVBRUSH8	Dryer Vent Brush	100	2.4	6

“Regularly clean your ducting using our cleaning brush to extend your dryer’s life!

Model No.	Page	Model No.	Page	Model No.	Page	Model No.	Page	Model No.	Page
50	30	D213	27	DFE106B	44	DVSSC	18	FT150F	24
51	30	D221	27	DFE107B	44	DVSU	18	FTPRO150F	24
99	30	D224	27	DFE108B	44	DVSWI	19	FTPRO200F	24
6145	40	D225	27	DFE109B	44	DVSWO	19	FUL0425	46
361TAPE	18	D226	27	DG2406	40	DVSWP	19	FUL0525	46
AO4014MR	45	D227	27	DG2408	40	DY1088	48	FUL0625	26+46
AO403M	45	D228	27	DG2410	40	DY1088-i	48	FUL0825	46
AO403MR	45	D229	27	DG2412	40	DY644	48	GSPS042430	45
AO48MX/9	45	D230	27	DG2416	40	DY644-i	48	GSPS052430	45
AO5014MR	45	D231	27	DG2418	40	DY866	48	GSPS062430	45
AO503M	45	D233	27	DG2424	40	DY866-i	48	GSPS082430	45
AO503MR	45	D301	31	DIRB54	49	EG600	42	GVSS100	34
AO6014MR	45	D302	31	DIRB65	49	EG625	42	GVSS125	34
AO603M	45	D303	31	DIRB86	49	EG655	42	GVSS150	34
AO603MR	45	D304	31	DJ150	26+39	ELB049030	49	GVSS200B	34
AO803M	45	D603M	25+47	DJ200	26+39	ELB059030	49	HGV4	33
CD150	39	D606M	25+47	DJ250	39	ELB069030	49	HGV5	33
CD200	26+39	D606M+	47	DK4E	21	ELB089030	49	HGV6	33
CD250	39	D606M++	47	DK4R	22	EVE	33	HS4W	32
CD300	39	D666-i	48	DK4W	21	EVSS100	35	HSM4W	33
CRA	50	D803M	47	DMR1217	29	EVSS125	35	HSM4WR	33
D1003M	47	D806M	47	DMR1228	29	EVSS150	35	HSM5W	33
D1006M	47	D806M+	47	DMRBRASS	29	EVSS20B	35	HSM5WR	33
D1006M+	47	D806M++	47	DMRCHROME	29	FD2001	12	HSM6W	33
D1006M++	47	D866	48	DP411S	32	FD2002	12	HSM6WR	33
D10108	48	D866-i	48	DV4A	20	FD2003	12	HSR4W	32
D10108-i	48	D886	48	DVBRUSH8	51	FD2004	12	HSR5W	32
D1086	48	D886-i	48	DVKFPL	23	FD2005	12	HSR6W	32
D1086-l	48	D888	48	DVKFPS	23	FD2006	12	HTK1	24
D1088	48	D888-l	48	DVKFPW	22	FD2007	12	HTK2	24
D1088-l	48	DAC10	49	DVS1	15	FD2008	13	HTK3	24
D1203M	47	DAC12	49	DVS1SS	15	FD2009	12	HVSS100	34
D1206M	47	DAC4	49	DVS2	14	FD2010	13	HVSS125	34
D1206M+	47	DAC5	49	DVS3	14	FD2011	13	HVSS150	34
D1206M++	47	DAC6	49	DVS4	16	FD2012	13	IMA100	36
D121010	48	DAC8	49	DVS5	15	FD2013	13	IMA125	36
D12108	48	DB4K	19	DVS6	16	FD2014	13	IMA150	36
D12108-i	48	DBV100	50	DVSA	17	FD2015	13	IMA200	36
D201	27	DBV125	51	DVSD	17	FD2016	13	KFM13	44
D202	27	DBV150	51	DVSE	18	FD2017	13	KFM23	44
D204	27	DBV200	51	DVSGR	18	FDK150	31	KFM36	44
D205	27	DFE100B	44	DVSI	17	FLSS125B	36	KFT38	44
D206	27	DFE101B	44	DVSO	18	FLSS200B	36	LFRHKW	13
D207	27	DFE102B	44	DVSS100	35	FO408B	46	LTF	20
D208	27	DFE103B	44	DVSS125	35	FO503M	46	LTKA	20
D209	27	DFE104B	44	DVSS150	35	FO603M	26+46	M603	41
D210	27	DFE105B	44	DVSS200B	35	FO803M	46	M604	41

# INDEX

Model No.	Page	Model No.	Page	Model No.	Page	Model No.	Page
M612	41	RCT	37	VKC5631T	13		
M613	41	RF41203	28	WOODPOLOAK	29		
M614	41	RF41213	28	WOODUNFOAK	29		
M622	41	RF41217	28	XRAG404	43		
M623	41	RF41218	28	XRAG410	43		
M624	41	RF41226	28	XRAG414	43		
M632	41	RF41228	28	XRAG425	43		
M633	41	RF41244	28	XRAG426	43		
M642	41	RF41249	28	XRAG427	43		
M643	41	RF41253	28	XRAG428	43		
M644	41	RF41256	28	XRAG434	43		
M652	41	RF41259	28	XRAG440	43		
M653	41	RHA5	10	XRAG444	43		
MC4/2	50	RHF5R	10				
MC5/2	50	RHF6R	10				
MC6/2	50	RHK125E	7				
MC8/2	50	RHK125ESS	7				
MDO601	42	RHK125T	6				
MDO602	42	RHK125W	8				
MDO611	42	RHK125WSS	8				
MDO621	42	RHK150E	7				
MDO631	42	RHK150ESS	7				
MDO641	42	RHK150T	6				
MDO651	42	RHK150W	8				
MV125PFS	38	RHK200ESS	7				
MV200	32	RHK200T	6				
MV450	40	RHK200W	8				
MV450R	40	RHK200WSS	8				
MV50/2BVS	39	RHKE65	10				
MVANTBRASS	29	RHKMR65	9				
MVBROWN	29	RHKTR65	9				
MVCHAR	29	RMC4M	37				
MVCHOC	29	RMC5M	37				
MVGREY	29	RMC6M	37				
MVICANTBRASS	29	RMC8M	37				
MVICBLACK	29	RSK150WSS	8				
MVICCHROME	29	SCA	50				
MVICNICK	29	SDA100B	44				
MVICPBRASS	29	SDA101B	44				
MVICWHITE	29	SDA102B	44				
MVLTBEIGE	29	SDA103B	44				
MVNICK	29	SDA104B	44				
MVWHITE	29	SDVSC	17				
PPS04430	45	SSE204	13				
PPS05430	45	TFG4	38				
PPS06430	45	TGF6	26+38				
PPS08430	45	VKC5631BR	13				



**PROVIDING INNOVATIVE,  
HIGH QUALITY SOLUTIONS SINCE 1975**



**JPM INTERNATIONAL PTY LTD**

23 Power Road,  
Bayswater VIC 3153

 03 9729 9777  
 [info@jpmark.com.au](mailto:info@jpmark.com.au)  
 [www.jpmbands.com.au](http://www.jpmbands.com.au)